

1022 W. First Street

WINSTON-SALEM, NC 27101

PRIVATE OFFICES

FOR LEASE



Private offices ranging from 180 SF to 1,135 SF. Pricing ranges from \$500-\$1,400/Month with utilities included. Surface parking and close proximity to downtown. Located right off of Business 40 and Peters Creek Parkway.

LEARN MORE ABOUT THIS PROPERTY



Nick Gonzalez

E Nick@LTPcommercial.com

M 305.979.3440

P 336.724.1715



Sarah Beth Ruffin

E SarahBeth@LTPcommercial.com

M 336.480.7070

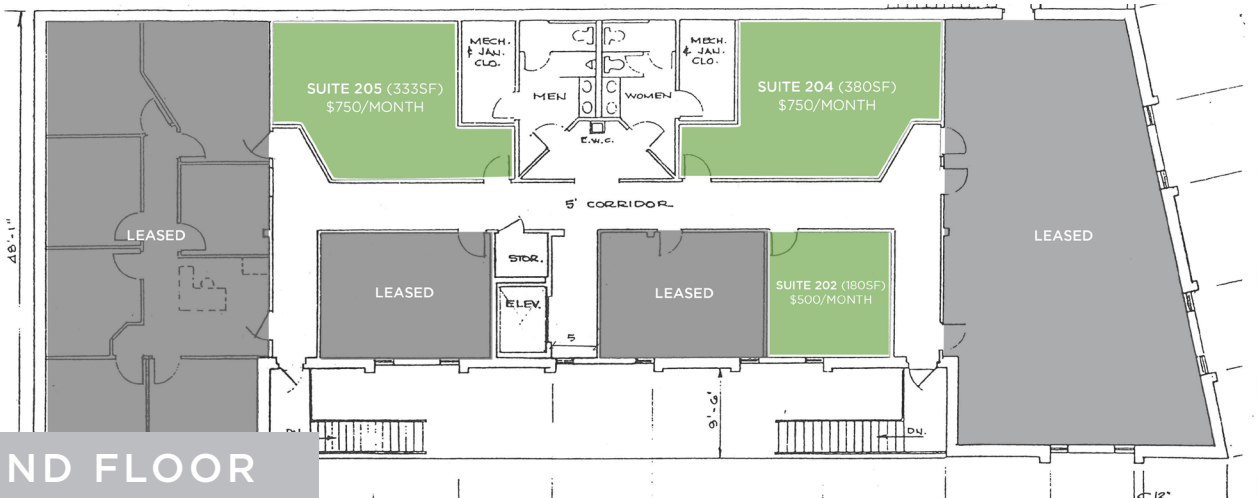
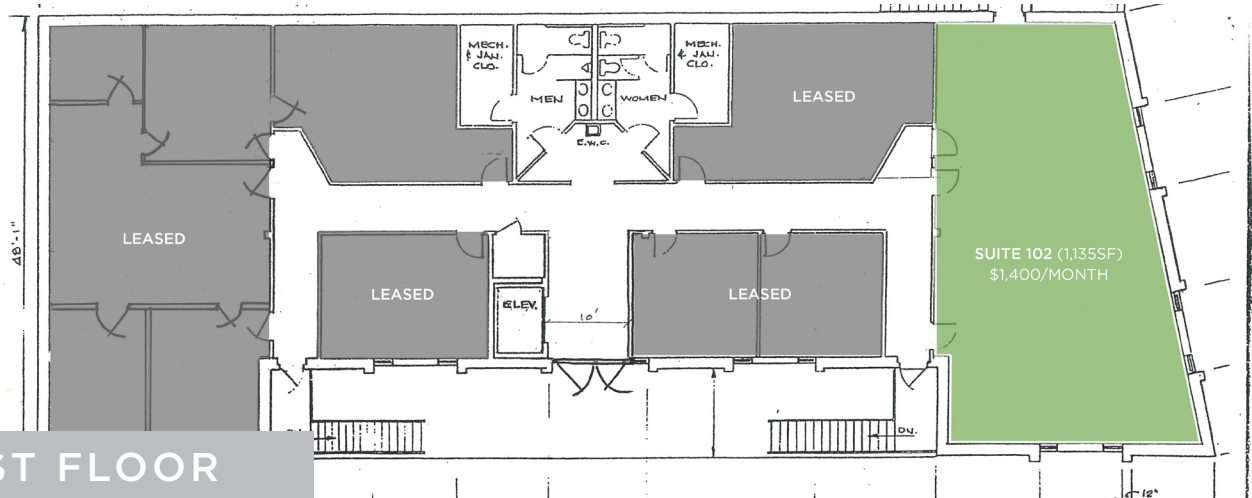
P 336.724.1715

1022 W. First Street

WINSTON-SALEM, NC 27101

PRIVATE OFFICES

FOR LEASE



- Private offices ranging from 180 SF - 1,135 SF
- Surface parking and close proximity to downtown
- Located right off Business 40 and Peters Creek Parkway
- Pricing: \$500 - \$1,400/Month, utilities included

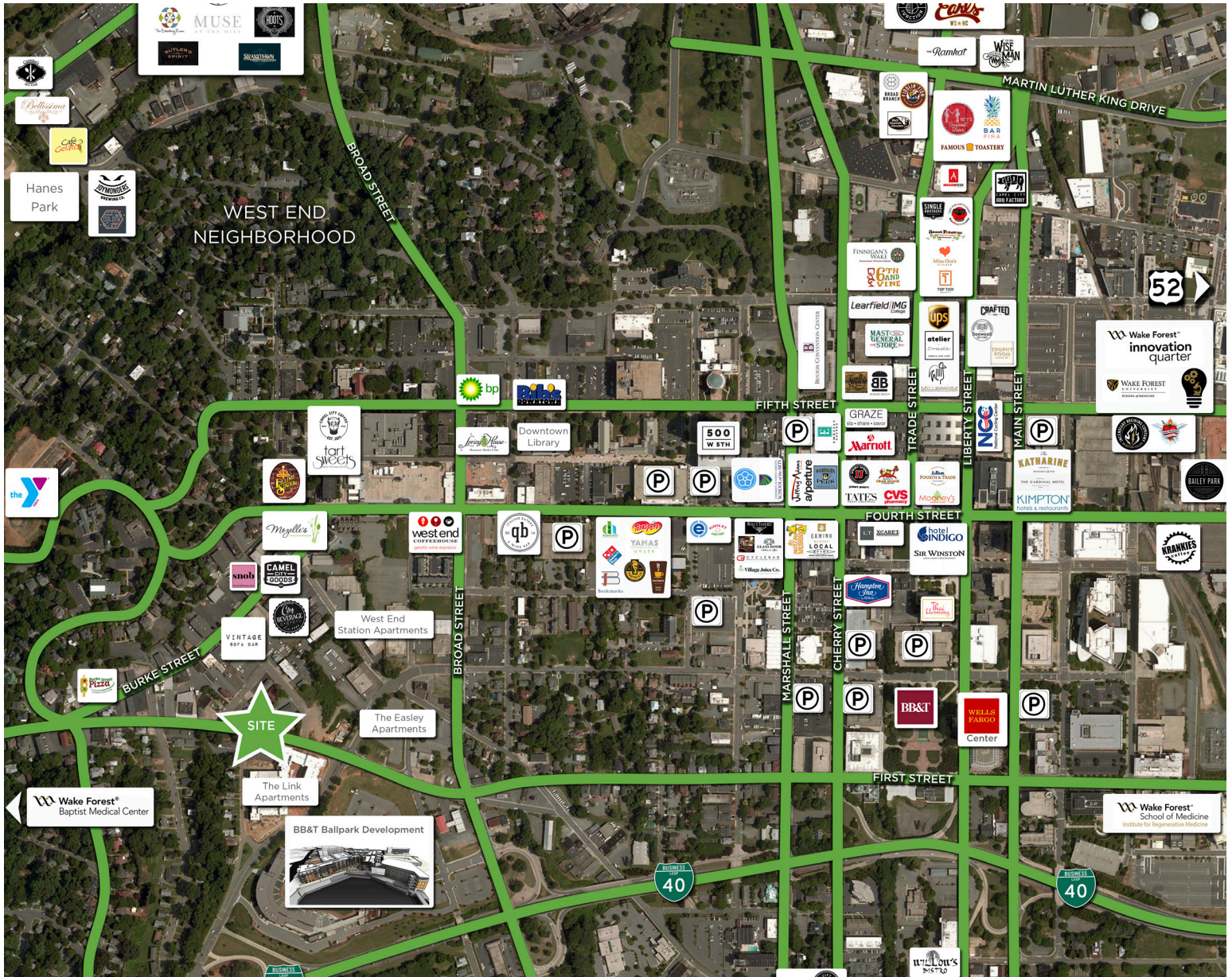


1022 W. First Street

WINSTON-SALEM, NC 27101

PRIVATE OFFICES

FOR LEASE



TO LEARN MORE ABOUT THIS PROPERTY, CONTACT:

Nick Gonzalez

Nick@LTPcommercial.com

Sarah Beth Ruffin

SarahBeth@LTPcommercial.com

1022 W. First Street

WINSTON-SALEM, NC 27101

PRIVATE OFFICES

FOR LEASE



LOCATION

Address 1022 W. First Street, Winston-Salem, NC 27101

PROPERTY DETAILS

Property Type	Office	Office SF ±	11,000	Year Built	1985	Restrooms	4
# Floors	2	SF per Floor	5,500	Elevator	Yes	Roof	

UTILITIES

Electrical	Duke	Water/Sewer	City	Heat/Air	Central	Gas	PNG
-------------------	------	--------------------	------	-----------------	---------	------------	-----

TAX INFORMATION

Zoning	PB-S	Tax Block/Lot	BL0638 BU1/ LO 026B	Tax Value	\$759,000	Tax PIN	6825-85-7373
---------------	------	----------------------	---------------------	------------------	-----------	----------------	--------------

PRICING & TERMS

Lease Rate	Varies	Lease Type	Full Service	Terms	
-------------------	--------	-------------------	--------------	--------------	--

The information contained herein has been taken from sources deemed to be reliable. Linville Team Partners makes no representation or warranties, expressed or implied, as to the accuracy of this information. All information in this document is subject to verification prior to purchase or lease.

TO LEARN MORE ABOUT THIS PROPERTY, CONTACT:

Nick Gonzalez
Nick@LTPcommercial.com

Sarah Beth Ruffin
SarahBeth@LTPcommercial.com