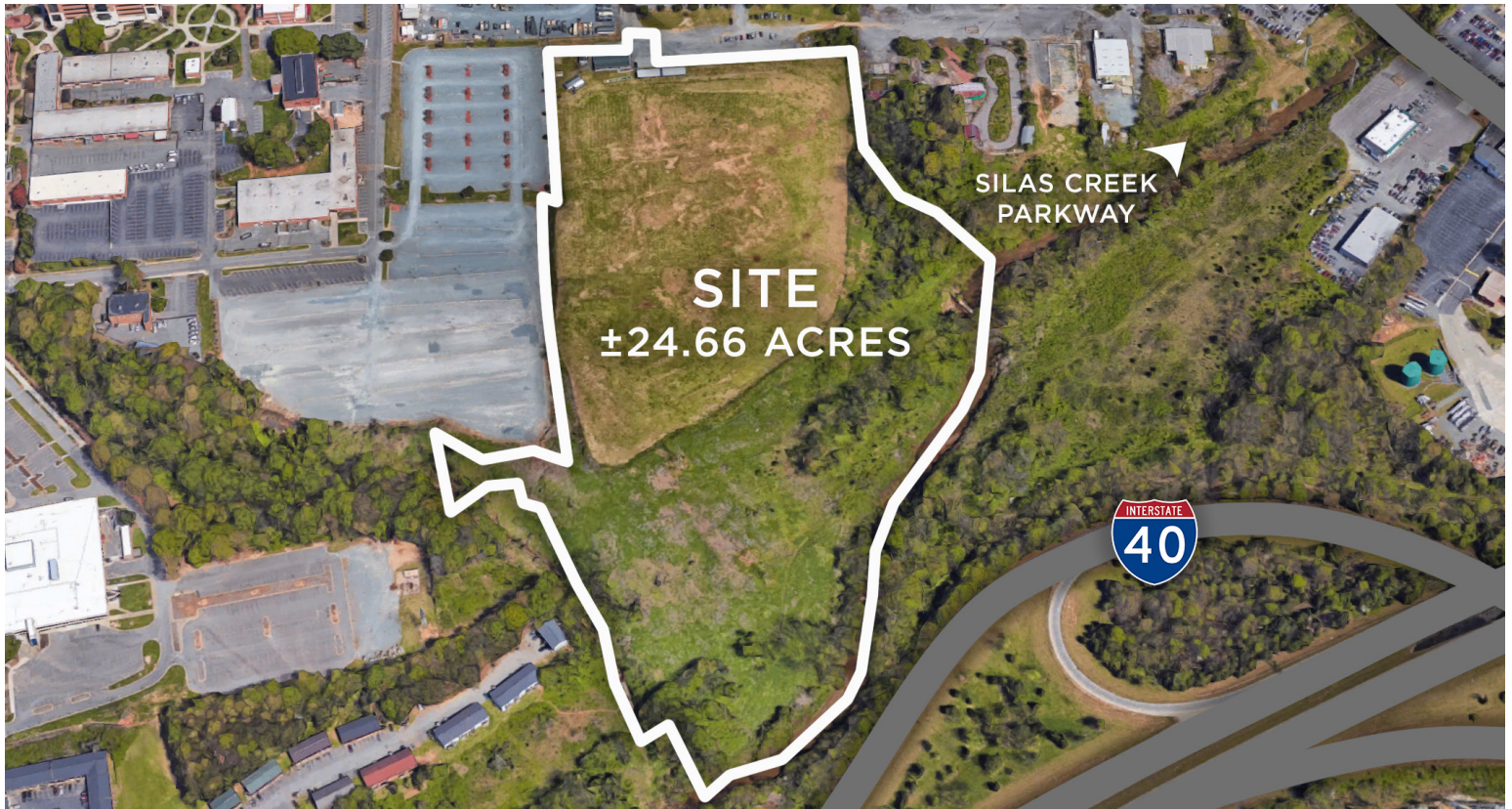


2020 Silas Creek Parkway

WINSTON-SALEM, NC 27103

±24.66 ACRES OFF SILAS CREEK PARKWAY

FOR SALE



±24.66 Acres off of Silas Creek Parkway! The sales counter and ball storage are located in a ±2,300 SF building with office space, kitchen, 3 bathrooms (one with shower), and large covered porch overlooking the tees and range. There are two additional storage buildings on site as well. This property and the surrounding area is a pre-regulation landfill site which will play a role in any redevelopment to take place. Prior use is a driving range but this would be a fantastic potential car lot, heavy machinery/equipment sales center, paintball/dirtbike/outdoor recreation center. Property needs renovation.

TO LEARN MORE ABOUT THIS PROPERTY CONTACT:



Nick Gonzalez

E Nick@LTPcommercial.com
M 336.448.2833
P 336.724.1715



Sarah Beth Ruffin

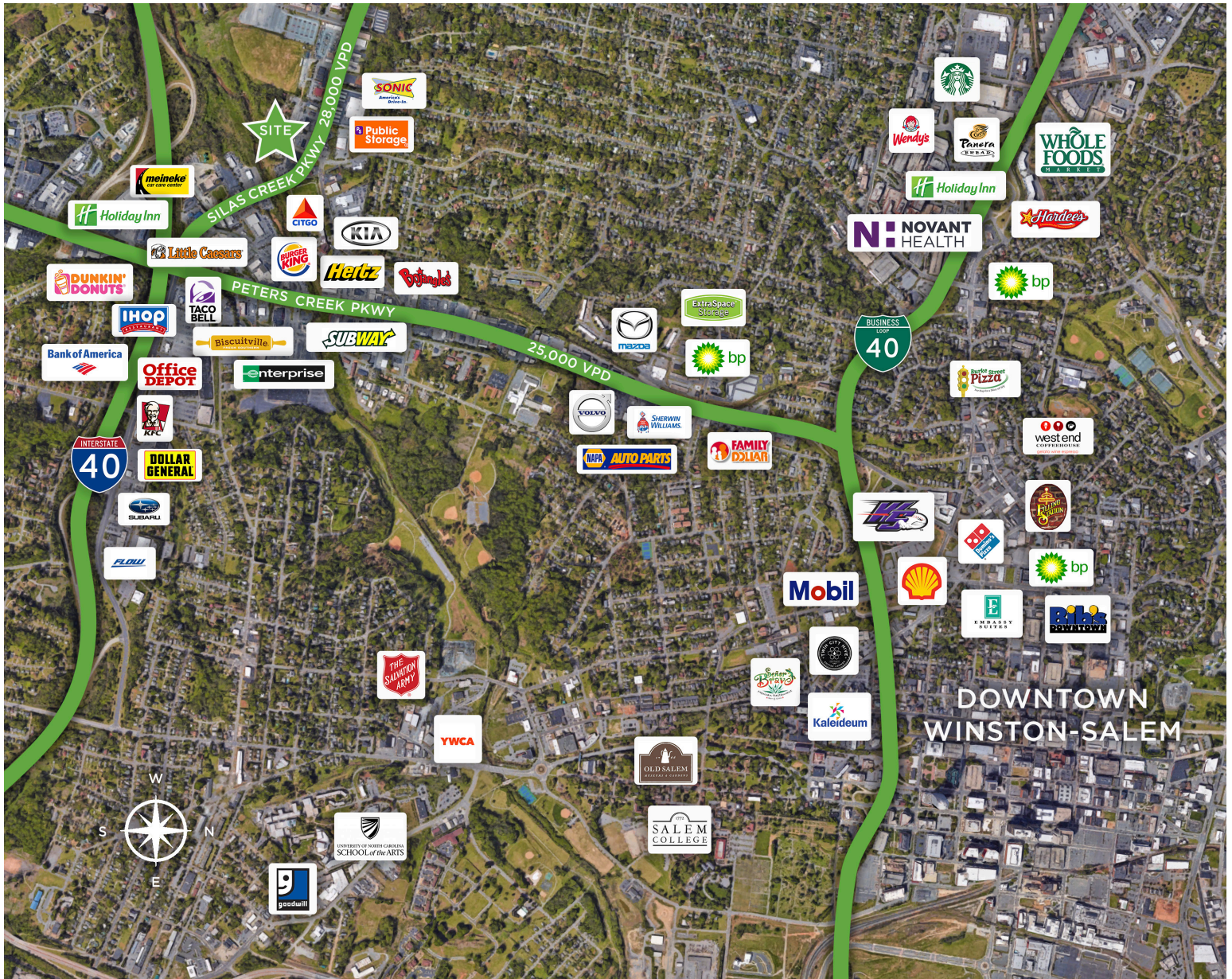
E SarahBeth@LTPcommercial.com
M 336.480.7070
P 336.724.1715

2020 Silas Creek Parkway

WINSTON-SALEM, NC 27103

±24.66 ACRES OFF SILAS CREEK PARKWAY

FOR SALE



TO LEARN MORE ABOUT THIS PROPERTY, CONTACT:

Nick Gonzalez

Nick@LTPcommercial.com

Sarah Beth Ruffin

SarahBeth@LTPcommercial.com

2020 Silas Creek Parkway

WINSTON-SALEM, NC 27103

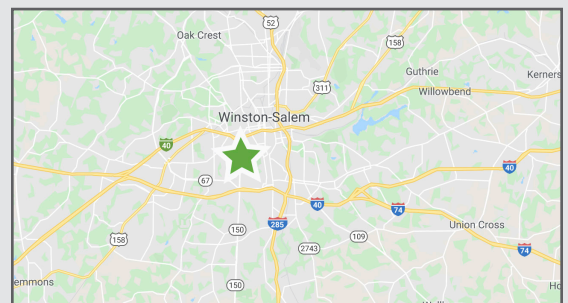
±24.66 ACRES OFF SILAS CREEK PARKWAY

FOR SALE



HISTORICAL PHOTOS

- ±24.66 Acres available conveniently located off of Silas Creek Parkway in close proximity to I-40
- Prior use is a driving range, but there is fantastic redevelopment opportunity!
- Zoned HB
- 28,000 VPD
- **Price: \$300,000**



2020 Silas Creek Parkway

WINSTON-SALEM, NC 27103

±24.66 ACRES OFF SILAS CREEK PARKWAY

FOR SALE

2019 DEMOGRAPHICS	1 MILE	3 MILES	5 MILES
POPULATION	10,715	70,789	156,868
TOTAL HOUSEHOLDS	4,541	29,861	63,661
AVERAGE HOUSEHOLD INCOME	\$58,880	\$67,234	\$70,389
VEHICLES PER DAY	SILAS CREEK PKWY.	PETERS CREEK PKWY.	
	28,000	25,000	

LOCATION

Address 2020 Silas Creek Parkway, Winston-Salem, NC 27103

PROPERTY DETAILS

Property Type	Retail	Property Subtype	Driving Range	Acres	24.66	# Buildings	4
SF Available	2,300	Zoning	HB	Tax Value	\$274,800	Tax PIN	6824-55-4732, 6824-56-2320

PRICING & TERMS

Price \$300,000

Comments ±24.66 Acres off of Silas Creek Parkway! The sales counter and ball storage are located in a ±2,300 SF building with office space, kitchen, 3 bathrooms (one with shower), and large covered porch overlooking the tees and range. There are two additional storage buildings on site as well. This property and the surrounding area is a pre-regulation landfill site which will play a role in any redevelopment to take place. Prior use is a driving range but this would be a fantastic potential car lot, heavy machinery/equipment sales center, paintball/dirtbike/outdoor recreation center.

The information contained herein has been taken from sources deemed to be reliable. Linville Team Partners makes no representation or warranties, expressed or implied, as to the accuracy of this information. All information in this document is subject to verification prior to purchase or lease.

TO LEARN MORE ABOUT THIS PROPERTY, CONTACT:

Nick Gonzalez
Nick@LTPcommercial.com

Sarah Beth Ruffin
SarahBeth@LTPcommercial.com