

2235-E Lewisville-Clemmons Road

CLEMMONS, NC 27012

OFFICE CONDO AVAILABLE

FOR LEASE



Highly desirable suburban office condo in Clemmons Village Professional Center. This ±1,256 SF quiet unit offers convenient surface parking and a tree-lined view, two private offices, kitchen, restroom, and an open concept layout for work stations. Conveniently located off of I-40 next to Wake Forest Baptist Health's Clemmons Medical Plaza, and in the midst of shopping and dining options.

TO LEARN MORE ABOUT THIS PROPERTY CONTACT:



Nick Gonzalez

E Nick@LTPcommercial.com

M 336.448.2833

P 336.724.1715



Sarah Beth Ruffin

E SarahBeth@LTPcommercial.com

M 336.480.7070

P 336.724.1715

2235-E Lewisville-Clemmons Road

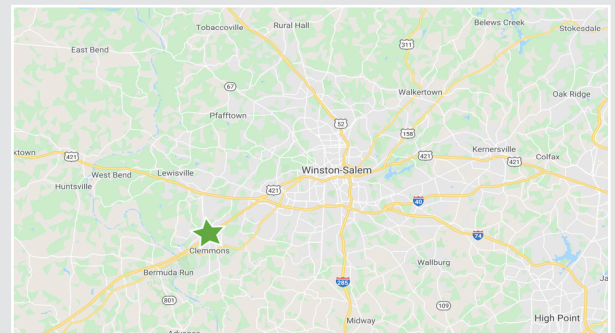
CLEMMONS, NC 27012

OFFICE CONDO AVAILABLE

FOR LEASE



- Highly desirable suburban office condo in Clemmons Village Professional Center
- ±1,256 SF quiet unit offers ample convenient surface parking and a tree-lined view, two private offices, kitchen, restroom, and an open concept for work stations
- Conveniently located off of I-40 next to Wake Forest Baptist Health's Clemmons Medical Plaza
- **Lease Rate: \$15.00psf, Modified Gross**

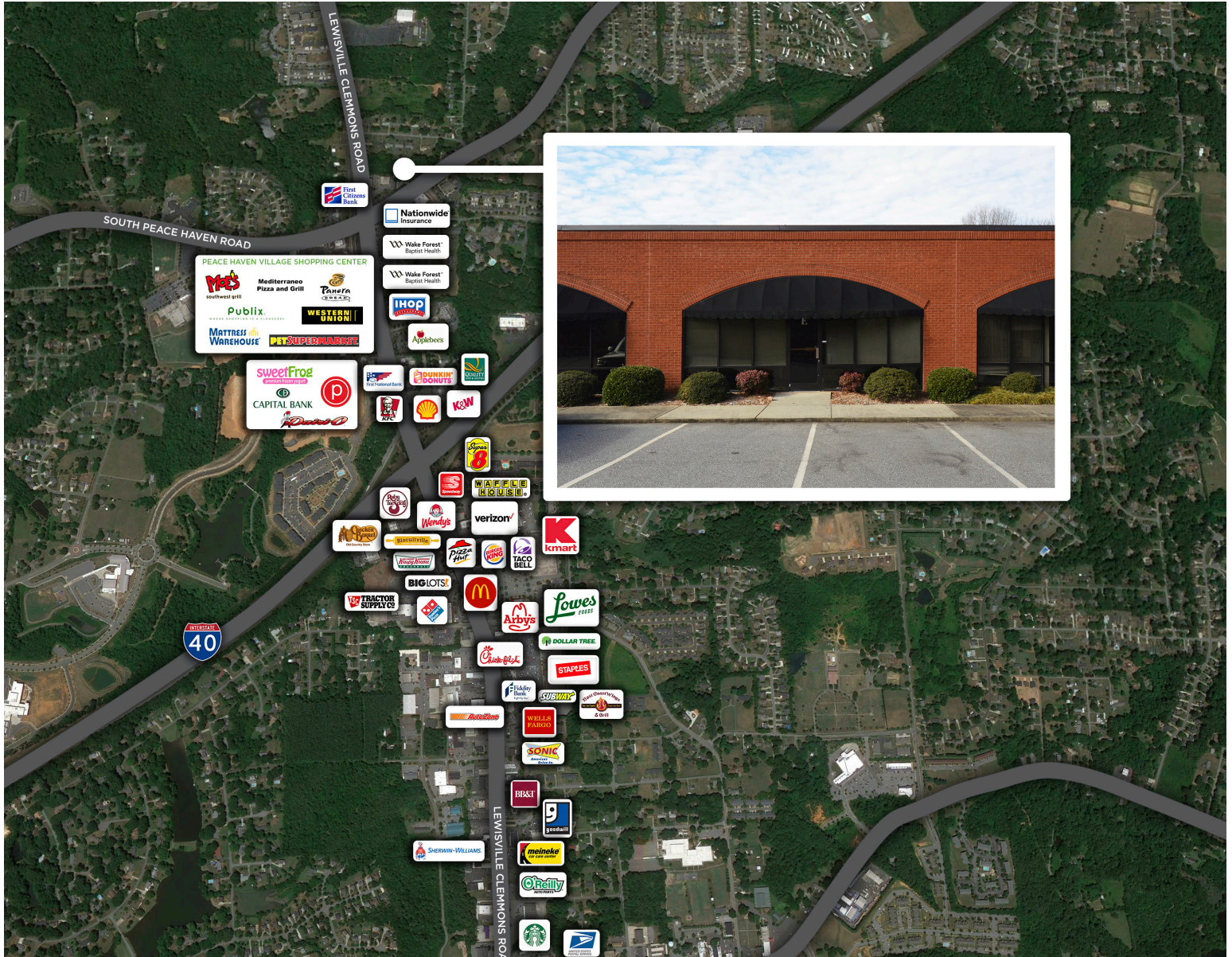


2235-E Lewisville-Clemmons Road

CLEMMONS, NC 27012

OFFICE CONDO AVAILABLE

FOR LEASE



TO LEARN MORE ABOUT THIS PROPERTY, CONTACT:

Nick Gonzalez
Nick@LTPcommercial.com

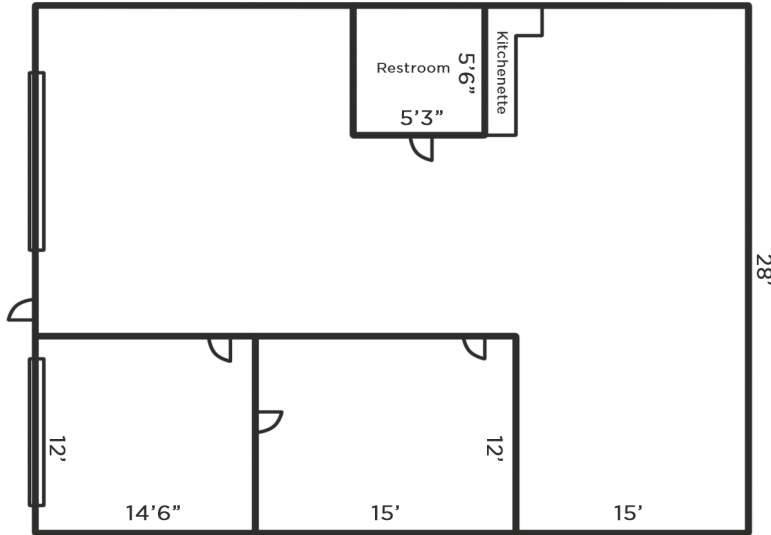
Sarah Beth Ruffin
SarahBeth@LTPcommercial.com

2235-E Lewisville-Clemmons Road

CLEMMONS, NC 27012

OFFICE CONDO AVAILABLE

FOR LEASE



SUITE E

±1,256 SF CONDO

PROPERTY DETAILS

Property Type	Office	Available SF ±	1,256	Year Built	1999	Exterior	Brick & Glass
# Floors	1	Restrooms	1	Parking	Surface	Flooring	Carpet

UTILITIES

Electrical	Yes	Water	City	Sewer	City	Gas	
------------	-----	-------	------	-------	------	-----	--

TAX INFORMATION

Zoning	LO-S	Tax PIN	5893-07-2397	Tax Map	588834	Tax Block/Lot	4233K/000E
--------	------	---------	--------------	---------	--------	---------------	------------

PRICING & TERMS

Lease Rate	\$15.00	Lease Type	Modified Gross			
------------	---------	------------	----------------	--	--	--

Comments Highly desirable suburban office condo in Clemmons Village Professional Center. This ±1,256 SF quiet unit offers convenient surface parking and a tree-lined view, two private offices, kitchen, restroom, and an open concept layout for work stations. Conveniently located off of I-40 next to Wake Forest Baptist Health's Clemmons Medical Plaza, and in the midst of shopping and dining options.

The information contained herein has been taken from sources deemed to be reliable. Linville Team Partners makes no representation or warranties, expressed or implied, as to the accuracy of this information. All information in this document is subject to verification prior to purchase or lease.

TO LEARN MORE ABOUT THIS PROPERTY, CONTACT:

Nick Gonzalez
Nick@LTPcommercial.com

Sarah Beth Ruffin
SarahBeth@LTPcommercial.com