

PARK WEST OFFICES

FOR LEASE | 4400 SILAS CREEK PARKWAY
3600 COUNTRY CLUB ROAD

Linville | Team Partners

COMMERCIAL REAL ESTATE



PROFESSIONAL OFFICE SPACE

PROPERTY HIGHLIGHTS

PROPERTY TYPE	Office
4400 BUILDING AVAILABLE RSF ±	567 - 5,489
3600 BUILDING AVAILABLE RSF ±	108 - 8,371
LEASE RATE	\$17.00, Full Service

DESCRIPTION

±108-8,371 RSF of professional office space at the corner of Silas Creek Parkway and Country Club Road. Very good visibility, ample parking, and a variety of floor plans make for a great leasing opportunity. Park West offers easy access to major thoroughfares including I-40, Hanes Mall Boulevard and Stratford Road.



AUBREY LINVILLE

E Aubrey@LTPcommercial.com
M 336.345.7300
P 336.724.1715

JORDAN COOPER

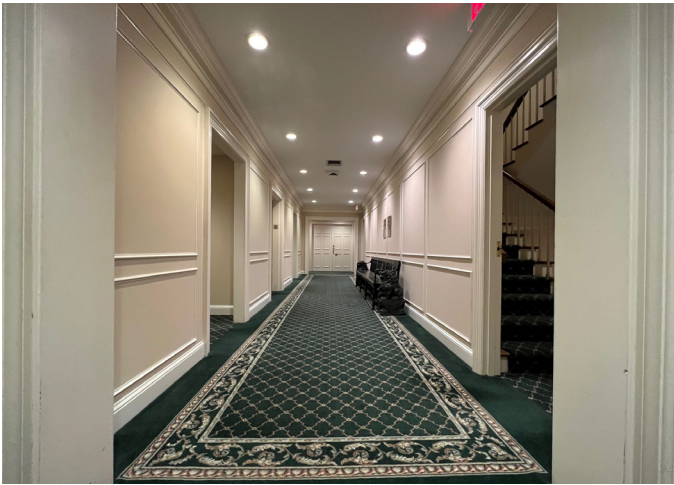
E Jordan@LTPcommercial.com
M 303.717.3160
P 336.724.1715

PARK WEST OFFICES

FOR LEASE | 4400 SILAS CREEK PARKWAY
3600 COUNTRY CLUB ROAD

Linville | Team Partners

COMMERCIAL REAL ESTATE



206 W. FOURTH STREET • WINSTON-SALEM • NORTH CAROLINA • 27101

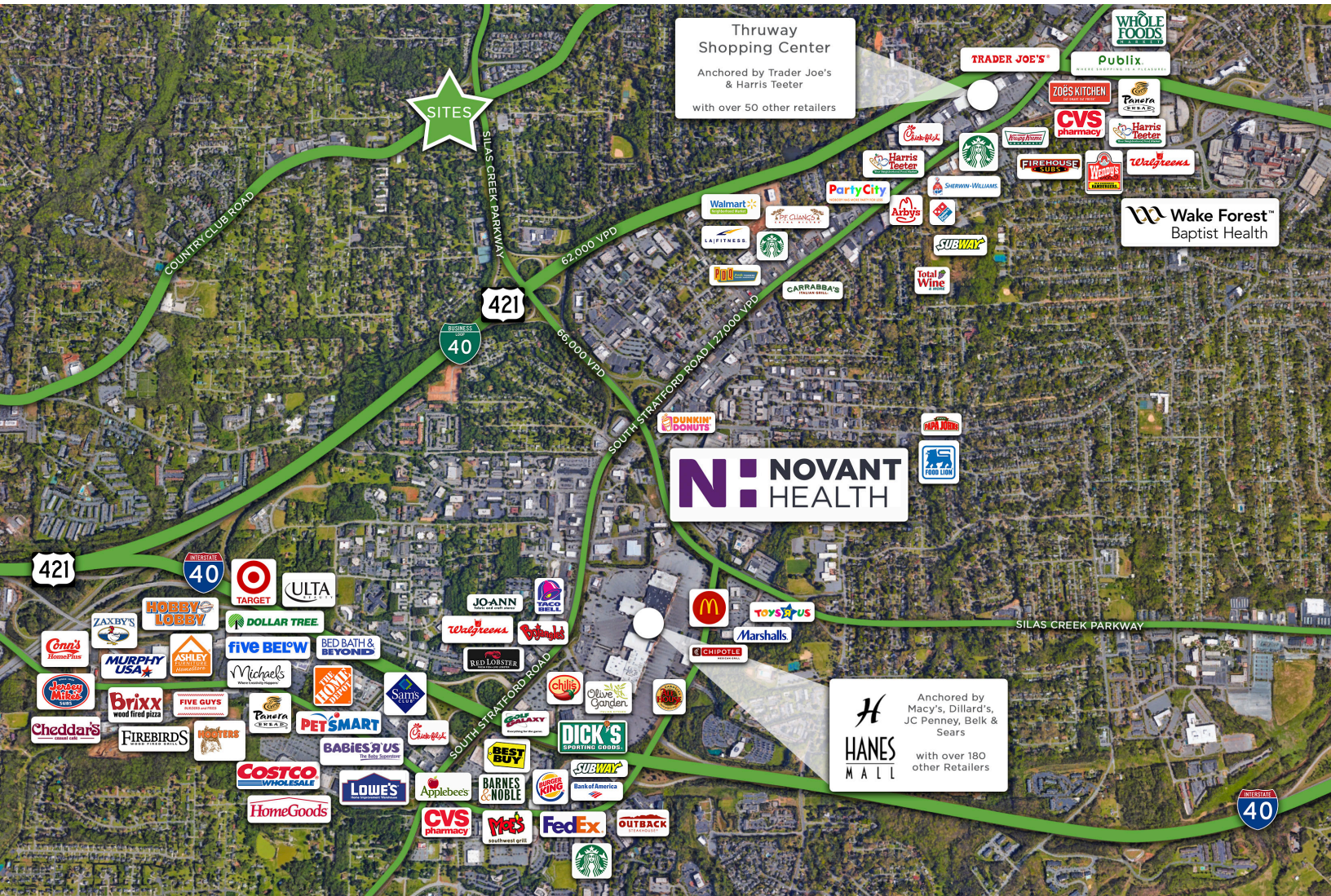
LTPCOMMERCIAL.COM • 336.724.1715

PARK WEST OFFICES

FOR LEASE | 4400 SILAS CREEK PARKWAY
3600 COUNTRY CLUB ROAD

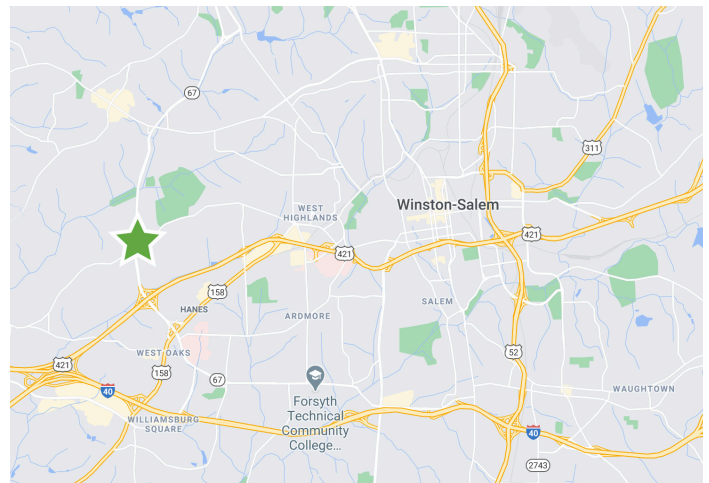
Linville | Team Partners

COMMERCIAL REAL ESTATE



KEY FEATURES

- Availability in two office buildings
- Great visibility, ample parking, and a variety of floor plans available
- Located at the corner of Silas Creek Parkway & Country Club Road
- Daily suite vacuuming and trash removal
- On-site mail and FedEx pick up
- **Rent: \$17.00, Full Service**



206 W. FOURTH STREET • WINSTON-SALEM • NORTH CAROLINA • 27101

LTPCOMMERCIAL.COM • 336.724.1715

PARK WEST OFFICES

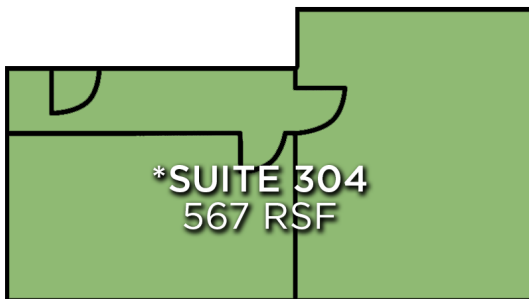
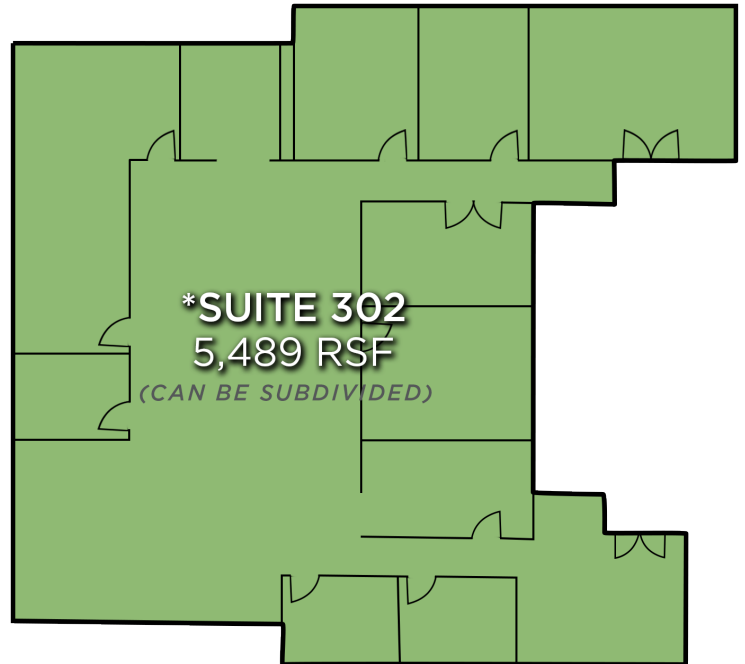
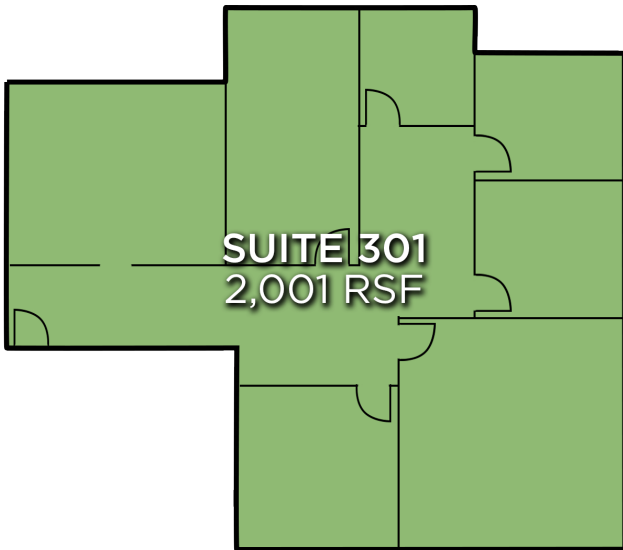
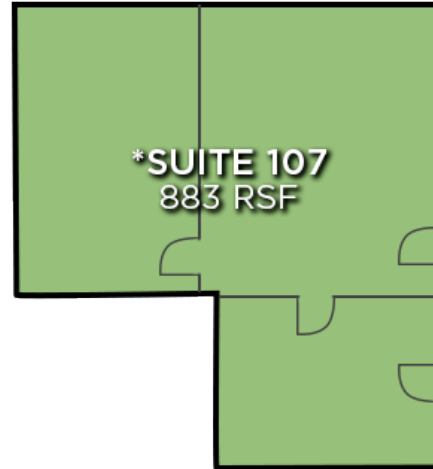
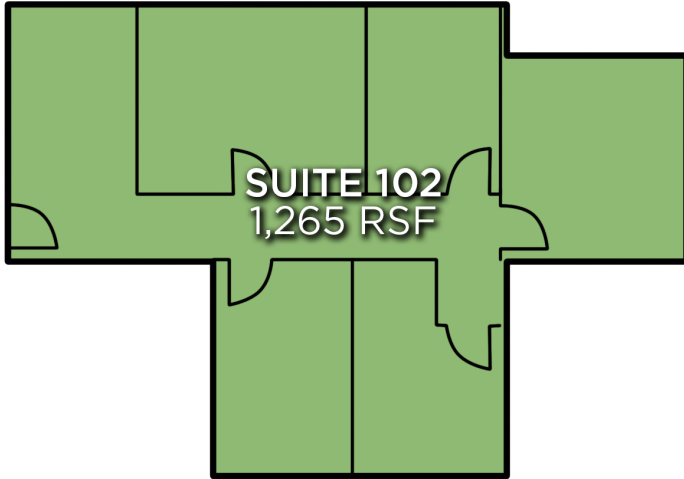
FOR LEASE | 4400 SILAS CREEK PARKWAY
3600 COUNTRY CLUB ROAD

Linville | Team Partners

COMMERCIAL REAL ESTATE

4400 SILAS CREEK PARKWAY FLOOR PLANS

*NOT TO SCALE



*AVAILABLE OCTOBER 2022



206 W. FOURTH STREET • WINSTON-SALEM • NORTH CAROLINA • 27101

LTPCOMMERCIAL.COM • 336.724.1715

PARK WEST OFFICES

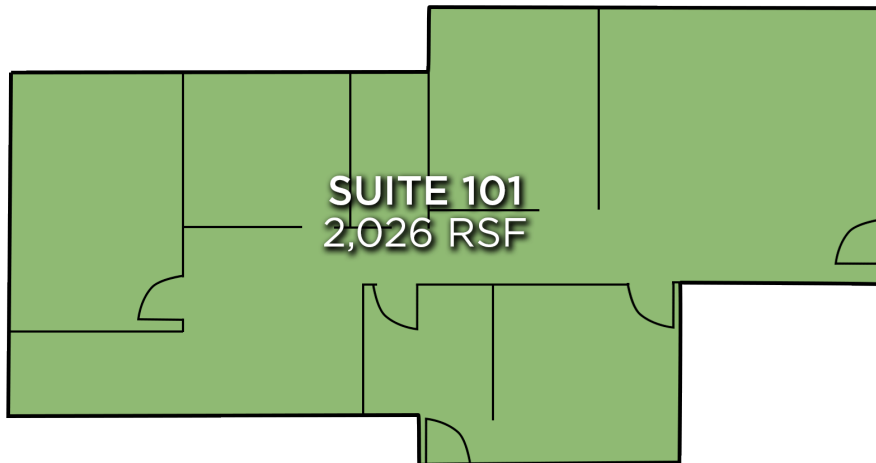
FOR LEASE | 4400 SILAS CREEK PARKWAY
3600 COUNTRY CLUB ROAD

Linville | Team Partners

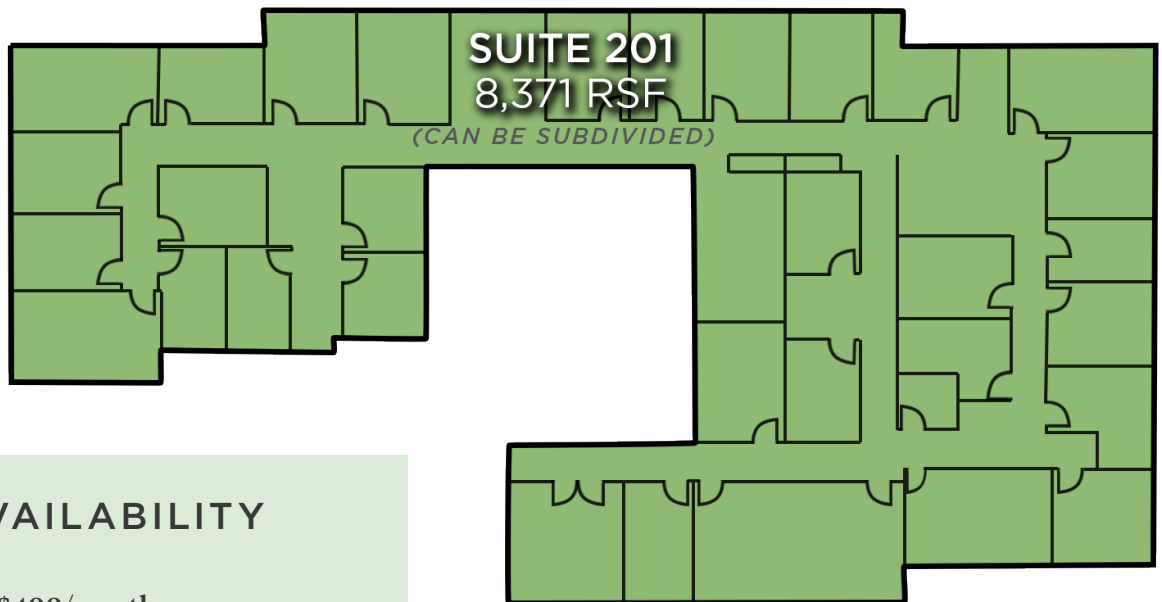
COMMERCIAL REAL ESTATE

3600 COUNTRY CLUB ROAD FLOOR PLANS

*NOT TO SCALE



SUITE 101
2,026 RSF



SUITE 201
8,371 RSF

(CAN BE SUBDIVIDED)

KEY MAN AVAILABILITY

- ±108 SF suite for \$400/month
- Furnished with a desk, desk chair, and office hutch
- Rate includes high-speed secure internet, janitorial service, use of workroom with a color printer/scanner, breakroom and conference room
- Tenant responsible for phone service



206 W. FOURTH STREET • WINSTON-SALEM • NORTH CAROLINA • 27101

LTPCOMMERCIAL.COM • 336.724.1715

PARK WEST OFFICES

FOR LEASE | 4400 SILAS CREEK PARKWAY
3600 COUNTRY CLUB ROAD

Linville | Team Partners

COMMERCIAL REAL ESTATE

PROPERTY INFORMATION

PROPERTY TYPE	Office	BUILDINGS	2
YEAR BUILT	1989	4400 BUILDING AVAILABLE RSF ±	567 - 5,489
YEAR RENOVATED	2000	3600 BUILDING AVAILABLE RSF ±	108 - 8,371

PRICING & TERMS

LEASE RATE	\$17.00	LEASE TYPE	Full Service
------------	---------	------------	--------------

DESCRIPTION

±108-8,371 RSF of professional office space at the corner of Silas Creek Parkway and Country Club Road. Very good visibility, ample parking, and a variety of floor plans make for a great leasing opportunity. Park West offers easy access to major thoroughfares including I-40, Hanes Mall Boulevard and Stratford Road.

The information contained herein has been taken from sources deemed to be reliable. Linville Team Partners makes no representation or warranties, expressed or implied, as to the accuracy of this information. All information in this document is subject to verification prior to purchase or lease.



206 W. FOURTH STREET • WINSTON-SALEM • NORTH CAROLINA • 27101
LTPCOMMERCIAL.COM • 336.724.1715