

Linville | Team Partners

COMMERCIAL REAL ESTATE



5509 W. FRIENDLY AVENUE

BUILDING B, GREENSBORO, NC 27410



Entryway



Private Entry Office

TO LEARN MORE ABOUT THIS PROPERTY, CONTACT:



Nick Gonzalez

E Nick@LTPcommercial.com

M 336.448.2833

P 336.724.1715



Sarah Beth Ruffin

E SarahBeth@LTPcommercial.com

M 336.480.7070

P 336.724.1715

Linville | Team Partners

COMMERCIAL REAL ESTATE

Office Suite



Entryway



Office Suite



Office Suite



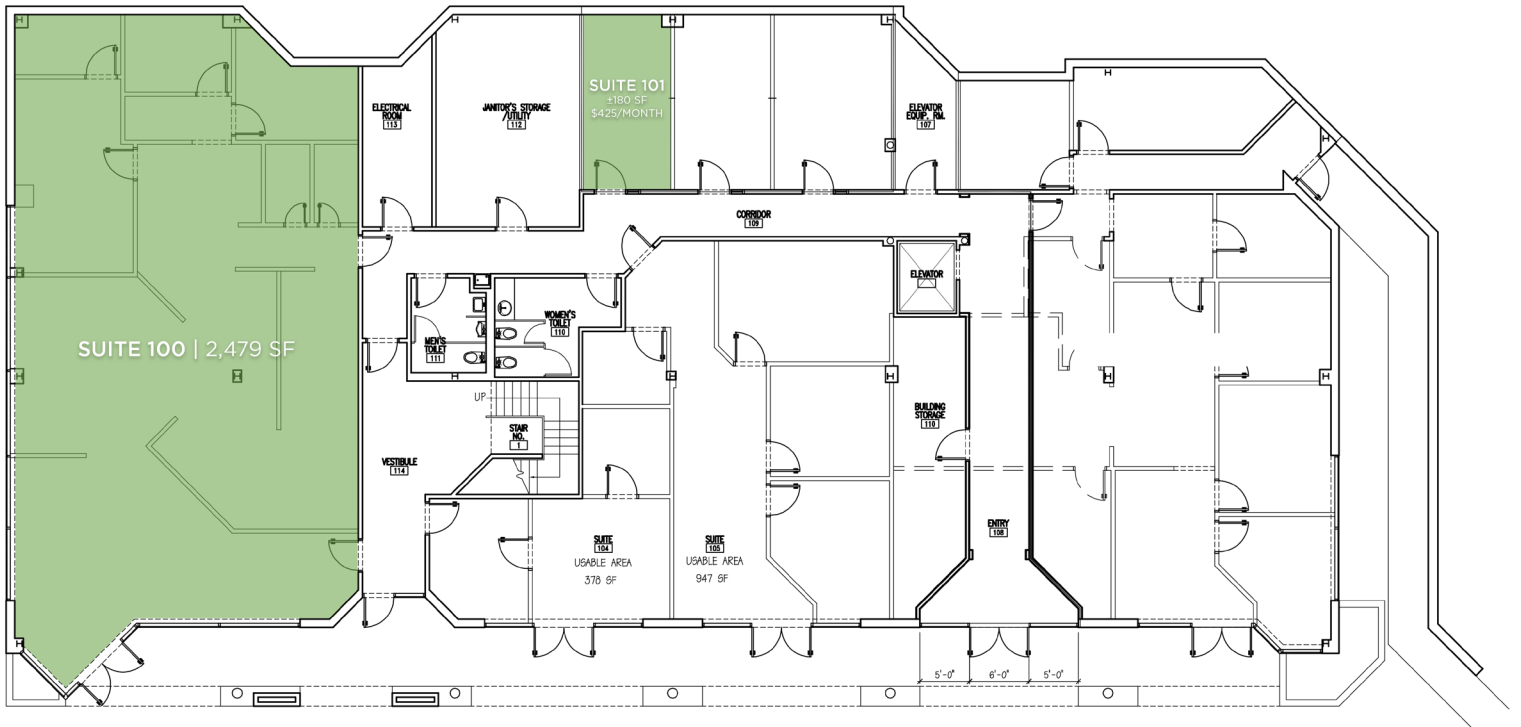
TO LEARN MORE ABOUT THIS PROPERTY, CONTACT:

Nick Gonzalez

Nick@LTPcommercial.com

Sarah Beth Ruffin

SarahBeth@LTPcommercial.com



FIRST FLOOR PLAN

5509-B W. FRIENDLY AVENUE, GREENSBORO, NC 27410



Renovated Entryway



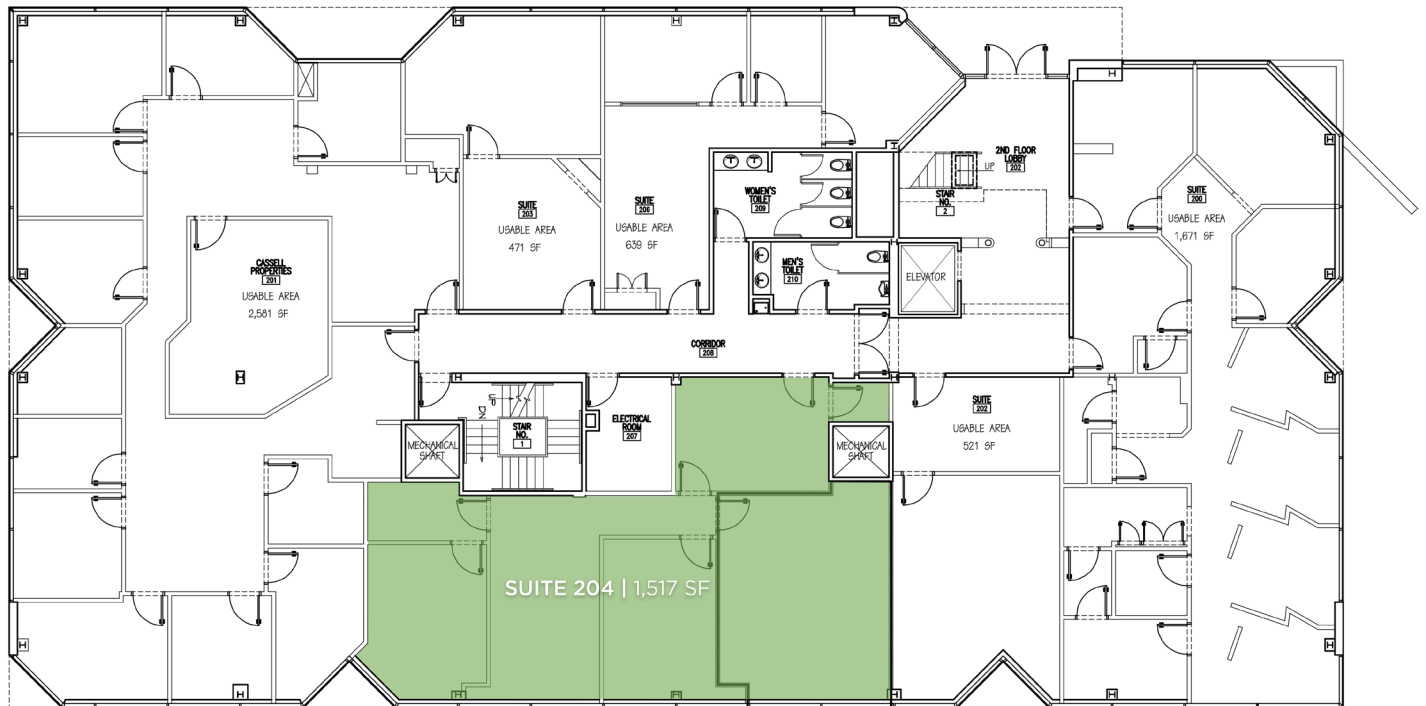
TO LEARN MORE ABOUT THIS PROPERTY, CONTACT:

Nick Gonzalez

Nick@LTPcommercial.com

Sarah Beth Ruffin

SarahBeth@LTPcommercial.com



SECOND FLOOR PLAN

5509-B W. FRIENDLY AVENUE, GREENSBORO, NC 27410



TO LEARN MORE ABOUT THIS PROPERTY, CONTACT:

Nick Gonzalez

Nick@LTPcommercial.com

Sarah Beth Ruffin

SarahBeth@LTPcommercial.com

Office Suite



PROPERTY OVERVIEW

Address	5509-B W. Friendly Avenue, Greensboro, NC 27410				
Property Type	Office	Year Built	1987	Available SF	180 - 2,479
Building Size ±	26,899	Land Size (Acres)	1.58	# of Floors	3
Restrooms	6	Elevator	Yes	Parking	105+ Spaces

LEASE INFORMATION

Lease Rate	\$15.00	Lease Type	Full Service (Excludes Janitorial)
Description	±180 - 2,479 SF available office space in popular Northwest Guilford County in the Guilford College and Quaker Village shopping area. This park-like office setting offers some recent updates such as new flooring, a new HVAC system, ample parking, and close proximity to restaurants and shopping. Ground level private entry retail-like space available as well as second floor available suites.		

The information contained herein has been taken from sources deemed to be reliable. Linville Team Partners makes no representation or warranties, expressed or implied, as to the accuracy of this information. All information in this document is subject to verification prior to purchase or lease.

TO LEARN MORE ABOUT THIS PROPERTY, CONTACT:

Nick Gonzalez
Nick@LTPcommercial.com

Sarah Beth Ruffin
SarahBeth@LTPcommercial.com