

## 5640 Indiana Avenue

WINSTON-SALEM, NC 27106

10.21 ACRES - MULTIFAMILY | SENIOR HOUSING

FOR SALE



10.21 Acres for sale on Indiana Avenue. Ideally suited for senior housing or multifamily development, this is convenient to Historic Bethabara, and is easily accessible from University Parkway and directly across from the Salem Towne retirement community.

LEARN MORE ABOUT THIS PROPERTY



Nick Gonzalez

E Nick@LTPcommercial.com

M 336.448.2833

P 336.724.1715



Sarah Beth Ruffin

E SarahBeth@LTPcommercial.com

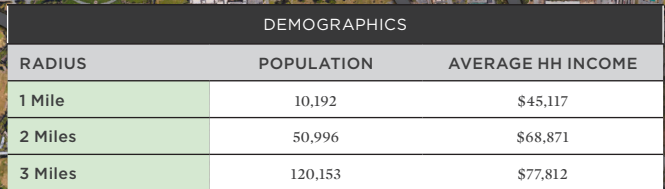
M 336.480.7070

P 336.724.1715



WINSTON-SALEM, NC 27106

FOR SALE



-

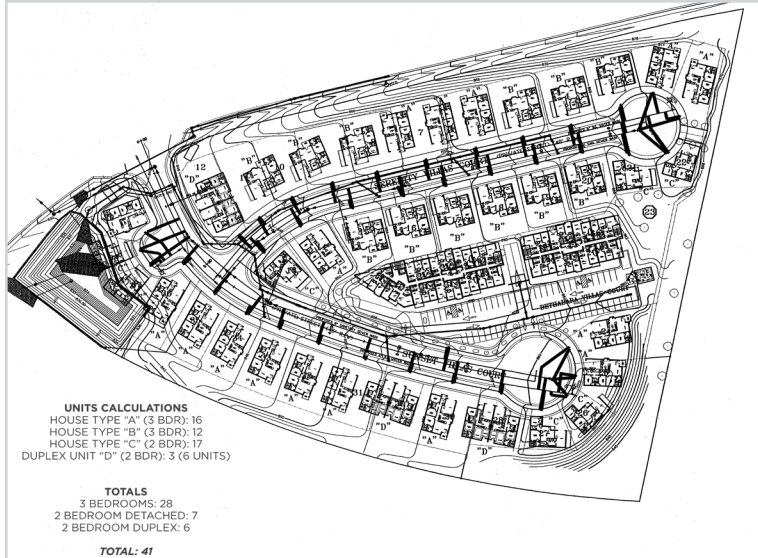


## 5640 Indiana Avenue

WINSTON-SALEM, NC 27106

10.21 ACRES - MULTIFAMILY | SENIOR HOUSING

FOR SALE



SAMPLE SITE PLAN



SURVEY

### PROPERTY DETAILS

Address	5640 Indiana Avenue, Winston-Salem, NC 27106				
Property Type	Land	Property Subtype	Residential, Multi-family, Senior Housing	Acres	10.21

### UTILITIES

Electrical	Available	Sewer	Available	Water	Available
------------	-----------	-------	-----------	-------	-----------

### TAX INFORMATION

Zoning	RM18-S	Tax Block/Lot	3453103	Tax PIN	6817-97-0305.00	Tax Value	\$366,700
--------	--------	---------------	---------	---------	-----------------	-----------	-----------

### PRICING & TERMS

Sales Price	\$ 995,000	Price/Acre	\$ 97,453.47
-------------	------------	------------	--------------

The information contained herein has been taken from sources deemed to be reliable. Linville Team Partners makes no representation or warranties, expressed or implied, as to the accuracy of this information. All information in this document is subject to verification prior to purchase or lease.

TO LEARN MORE ABOUT THIS PROPERTY, CONTACT:

**Nick Gonzalez**  
 Nick@LTPcommercial.com

**Sarah Beth Ruffin**  
 SarahBeth@LTPcommercial.com