

## 720 Park Centre Drive

KERNERSVILLE, NC 27284

SUITE B

FOR LEASE



±3,549 SF of office space available in Park Centre Business Park. This property is conveniently located between Salem Parkway and I-40, offering convenient access to major thoroughfares.

LEARN MORE ABOUT THIS PROPERTY



Nick Gonzalez

E [Nick@LTPcommercial.com](mailto:Nick@LTPcommercial.com)

M 336.448.2833

P 336.724.1715



Sarah Beth Ruffin

E [SarahBeth@LTPcommercial.com](mailto:SarahBeth@LTPcommercial.com)

M 336.480.7070

P 336.724.1715



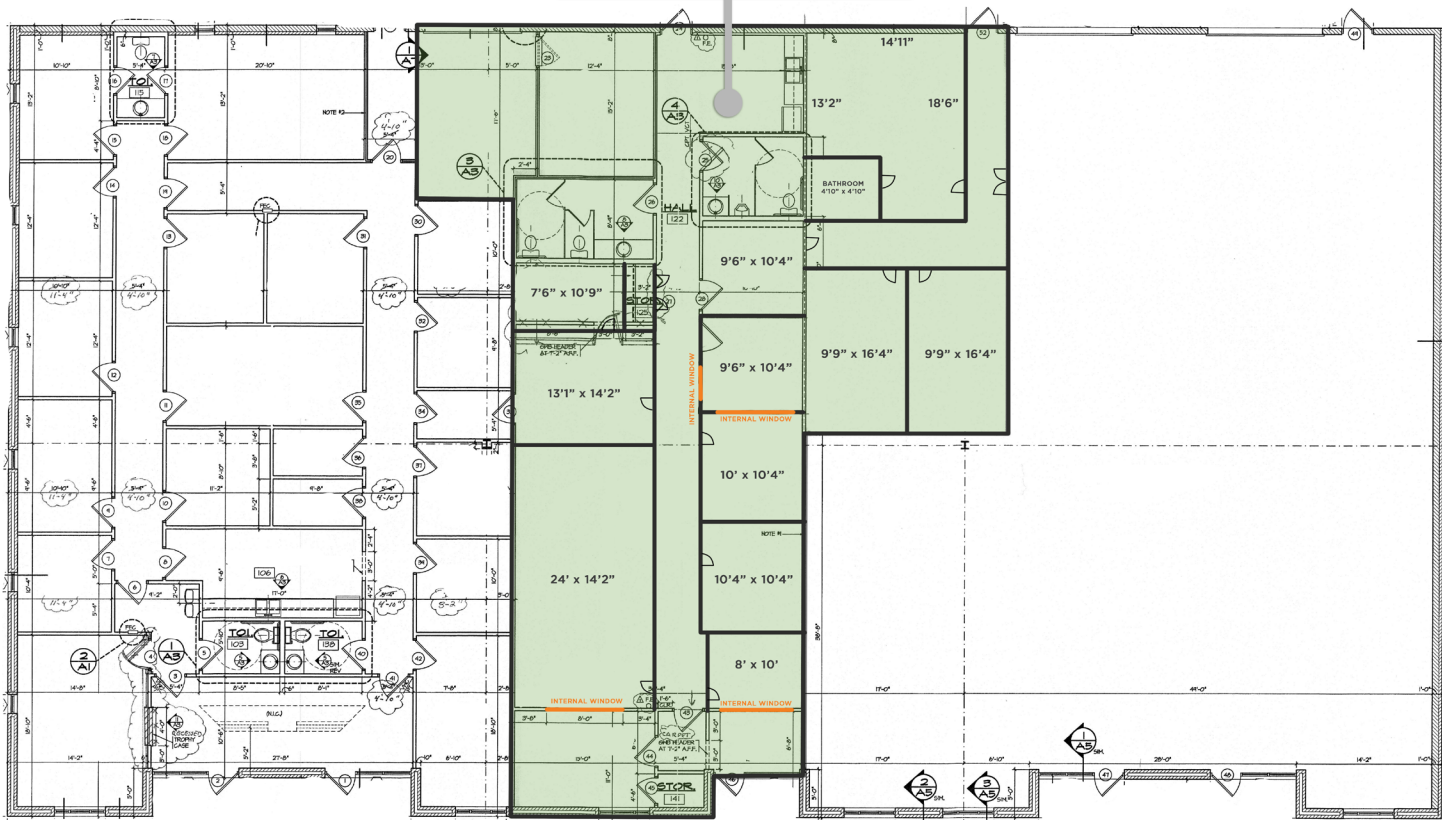
# 720 Park Centre Drive

KERNERSVILLE, NC 27284

SUITE B

FOR LEASE

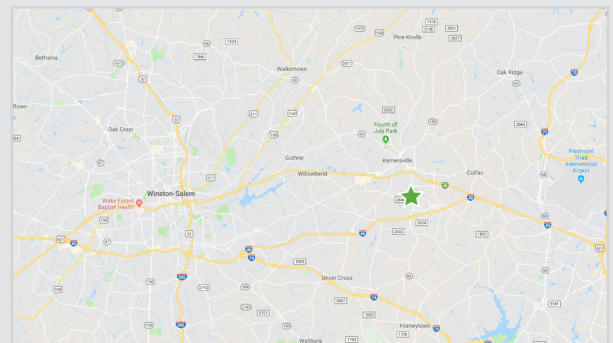
SUITE B | 3,549 SF



FLOOR PLAN

\*LAYOUT IS APPROXIMATE, SOME WALLS HAVE BEEN MOVED

- ±3,549 SF office space available
- Located in the Park Centre Business Park
- Conveniently located between Salem Parkway and I-40
- Pricing: \$10.50psf - \$13.50psf, Modified Gross



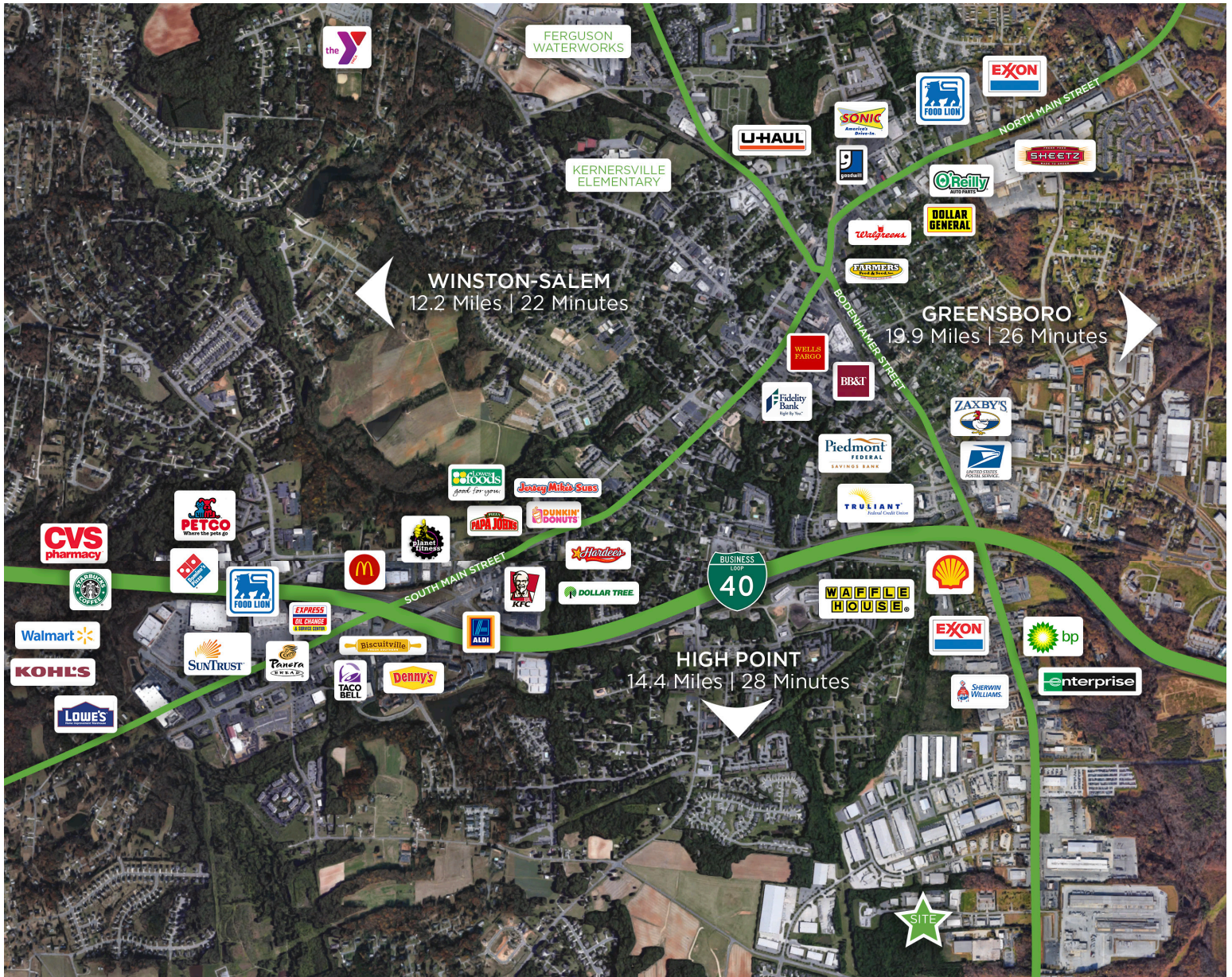


## 720 Park Centre Drive

KERNERSVILLE, NC 27284

SUITE B

FOR LEASE



TO LEARN MORE ABOUT THIS PROPERTY, CONTACT:

Nick Gonzalez

Nick@LTPcommercial.com

Sarah Beth Ruffin

SarahBeth@LTPcommercial.com



## 720 Park Centre Drive

KERNERSVILLE, NC 27284

SUITE B

FOR LEASE



### LOCATION

**Address** 720 Park Centre Drive, Kernersville, NC 27284

### PROPERTY DETAILS

<b>Property Type</b>	Office	<b>Building SF ±</b>	12,048	<b>Year Built</b>	2002	<b>Acres</b>	1.6
<b># Buildings</b>	1	<b>Available SF ±</b>	3,549	<b>Property Class</b>	B	<b>Parking</b>	Surface

### UTILITIES

<b>Electrical</b>	Duke	<b>Water/Sewer</b>	City	<b>Heat/Air</b>	Central	<b>Gas</b>	PNG
-------------------	------	--------------------	------	-----------------	---------	------------	-----

### TAX INFORMATION

<b>Zoning</b>	LI-S	<b>Tax Block/Lot</b>	5645H003	<b>Tax Value</b>	\$760,000	<b>Tax PIN</b>	6885-46-8324
---------------	------	----------------------	----------	------------------	-----------	----------------	--------------

### PRICING & TERMS

<b>Lease Rate</b>	\$10.50 - \$13.50	<b>Lease Type</b>	Modified Gross	<b>Terms</b>	
-------------------	-------------------	-------------------	----------------	--------------	--

The information contained herein has been taken from sources deemed to be reliable. Linville Team Partners makes no representation or warranties, expressed or implied, as to the accuracy of this information. All information in this document is subject to verification prior to purchase or lease.

TO LEARN MORE ABOUT THIS PROPERTY, CONTACT:

**Nick Gonzalez**  
[Nick@LTPcommercial.com](mailto:Nick@LTPcommercial.com)

**Sarah Beth Ruffin**  
[SarahBeth@LTPcommercial.com](mailto:SarahBeth@LTPcommercial.com)