



# CHURCH CAMPUS

## ANTIOCH BAPTIST CHURCH

### 910 PALMER LANE

Opportunity to own or lease multiple buildings and land ideally suited for religious, educational, or institutional type use. The property features main building of  $\pm 13,780$ sf which features a  $\pm 2,700$ sf sanctuary currently configured with 30 15-foot pews, a nursery, a baptistry, several conference/breakout rooms, classrooms and offices. Fellowship hall is a freestanding  $\pm 3,200$ sf building with a catering kitchen. The property is a total of  $\pm 4.53$  acres subject to verification through survey; the main parking lot is 57+ parking spaces, and the overflow parking lot is 40+ spaces. The property also has a basketball court, an outdoor picnic/pavilion area, a baseball field, and room for expansion or additional athletic fields and/or parking. There is an existing cemetery on site.

#### CAN'T MISS FEATURES

- $\pm 13,780$ sf main building with  $\pm 2,700$ sf sanctuary
- $\pm 4.53$  acre property with room for overflow parking and/or future development
- Extra amenities include a picnic/pavillion area, a basketball court, a baseball field, and other athletic fields
- Ideally suited for religious, educational, or institutional purposes
- **Lease Rate: \$6,500/Month, NNN**
- **Sales Price: \$695,000**



## MAIN BUILDING FEATURES

- ±13,780sf building
- ±2,700sf sanctuary currently configured with 30 15-foot pews
- Neighboring access to miles of new bike and pedestrian greenways
- Also contains a nursery, a baptistery, several conference/breakout rooms, classrooms and offices





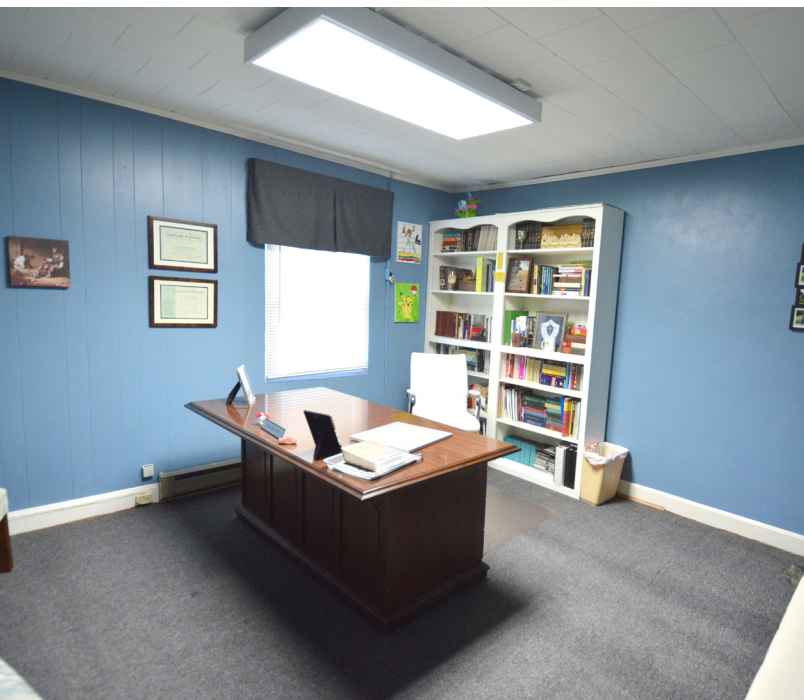


## FELLOWSHIP HALL

### FEATURES

- Fellowship hall is a freestanding ±3,200sf building
- Contains a catering kitchen and seating area





# ADDITIONAL FEATURES

- Basketball court
- Baseball field
- Picnic/pavillion area
- Main parking lot with 57+ parking spaces
- Overflow parking lot with 40+ spaces
- Additional land for athletic fields or more overflow parking



FOR ADDITIONAL INFORMATION, CONTACT:

**Nick Gonzalez**  
Nick@LTPcommercial.com

**Sarah Beth Ruffin**  
SarahBeth@LTPcommercial.com