



CHURCH CAMPUS

ANTIOCH BAPTIST CHURCH

910 PALMER LANE

Opportunity to own or lease multiple buildings and land ideally suited for religious, educational, or institutional type use. The property features main building of $\pm 13,780$ sf which features a $\pm 2,700$ sf sanctuary currently configured with 30 15-foot pews, a nursery, a baptistery, several conference/breakout rooms, classrooms and offices. Fellowship hall is a freestanding $\pm 3,200$ sf building with a catering kitchen. The property is a total of ± 4.53 acres subject to verification through survey; the main parking lot is 57+ parking spaces, and the overflow parking lot is 40+ spaces. The property also has a basketball court, an outdoor picnic/pavilion area, a baseball field, and room for expansion or additional athletic fields and/or parking. There is an existing cemetery on site.

CAN'T MISS FEATURES

- $\pm 13,780$ sf main building with $\pm 2,700$ sf sanctuary
- ± 4.53 acre property with room for overflow parking and/or future development
- Extra amenities include a picnic/pavillion area, a basketball court, a baseball field, and other athletic fields
- Ideally suited for religious, educational, or institutional purposes
- **Lease Rate: \$6,500/Month, NNN**
- **Sales Price: \$695,000**



MAIN BUILDING FEATURES

- ±13,780sf building
- ±2,700sf sanctuary currently configured with 30 15-foot pews
- Neighboring access to miles of new bike and pedestrian greenways
- Also contains a nursery, a baptistery, several conference/breakout rooms, classrooms and offices





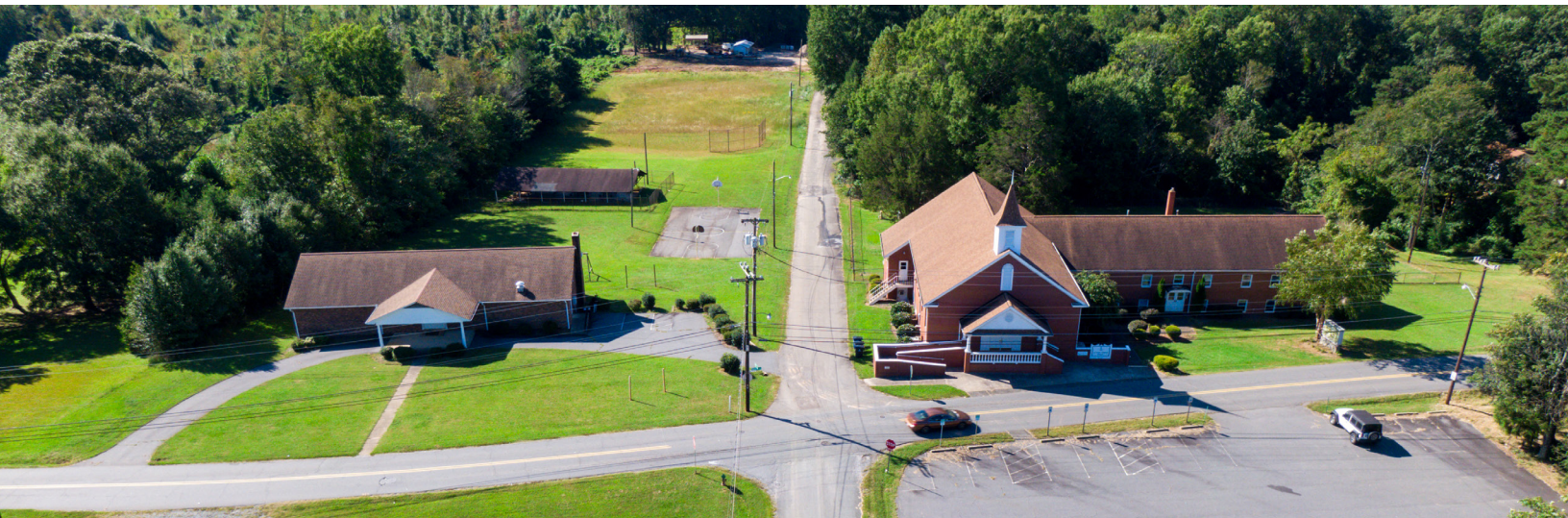
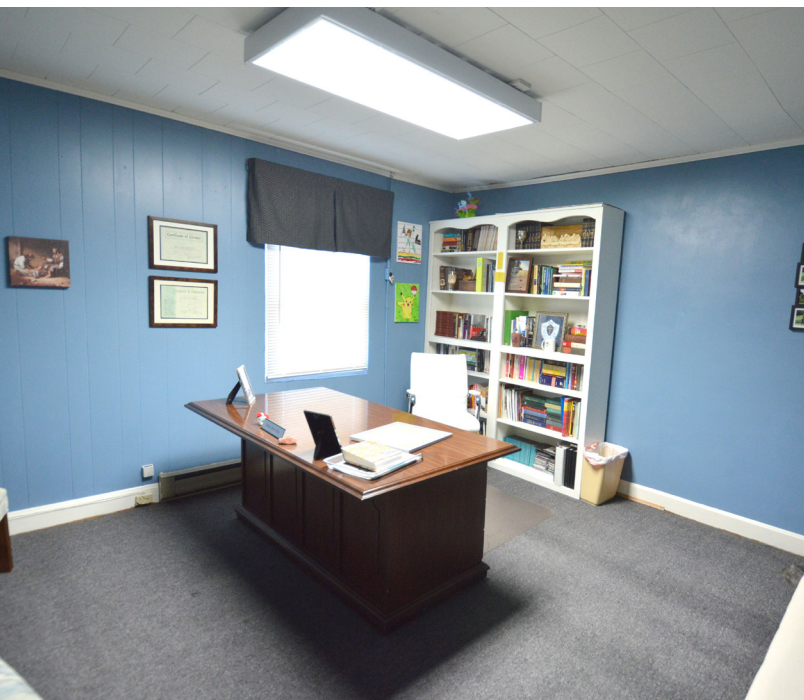


FELLOWSHIP HALL

FEATURES

- Fellowship hall is a freestanding ±3,200sf building
- Contains a catering kitchen and seating area





ADDITIONAL FEATURES

- Basketball court
- Baseball field
- Picnic/pavillion area
- Main parking lot with 57+ parking spaces
- Overflow parking lot with 40+ spaces
- Additional land for athletic fields or more overflow parking



FOR ADDITIONAL INFORMATION, CONTACT:

Nick Gonzalez

Nick@LTPcommercial.com