

1.9 Acres on Eastchester Drive

2004 EASTCHESTER DRIVE, HIGH POINT, NC 27265

LAND AVAILABLE FOR DEVELOPMENT

FOR SALE



Situated at the signalized corner of Eastchester Drive (Highway 68) and Deep River Road, this highly visible 1.9 acre tract is ideal for national and local retailers alike. The site has ± 300 feet of road frontage on both Eastchester Drive and Deep River Road. The property is a short distance from I-74. Water, sewer, and gas are all to the site. The adjoining 5.31 acres is also available.

TO LEARN MORE ABOUT THIS PROPERTY CONTACT:



Tommy Adams

E Tommy@LTPcommercial.com

M 828.719.0738

P 336.724.1715



Nick Gonzalez

E Nick@LTPcommercial.com

M 336.448.2833

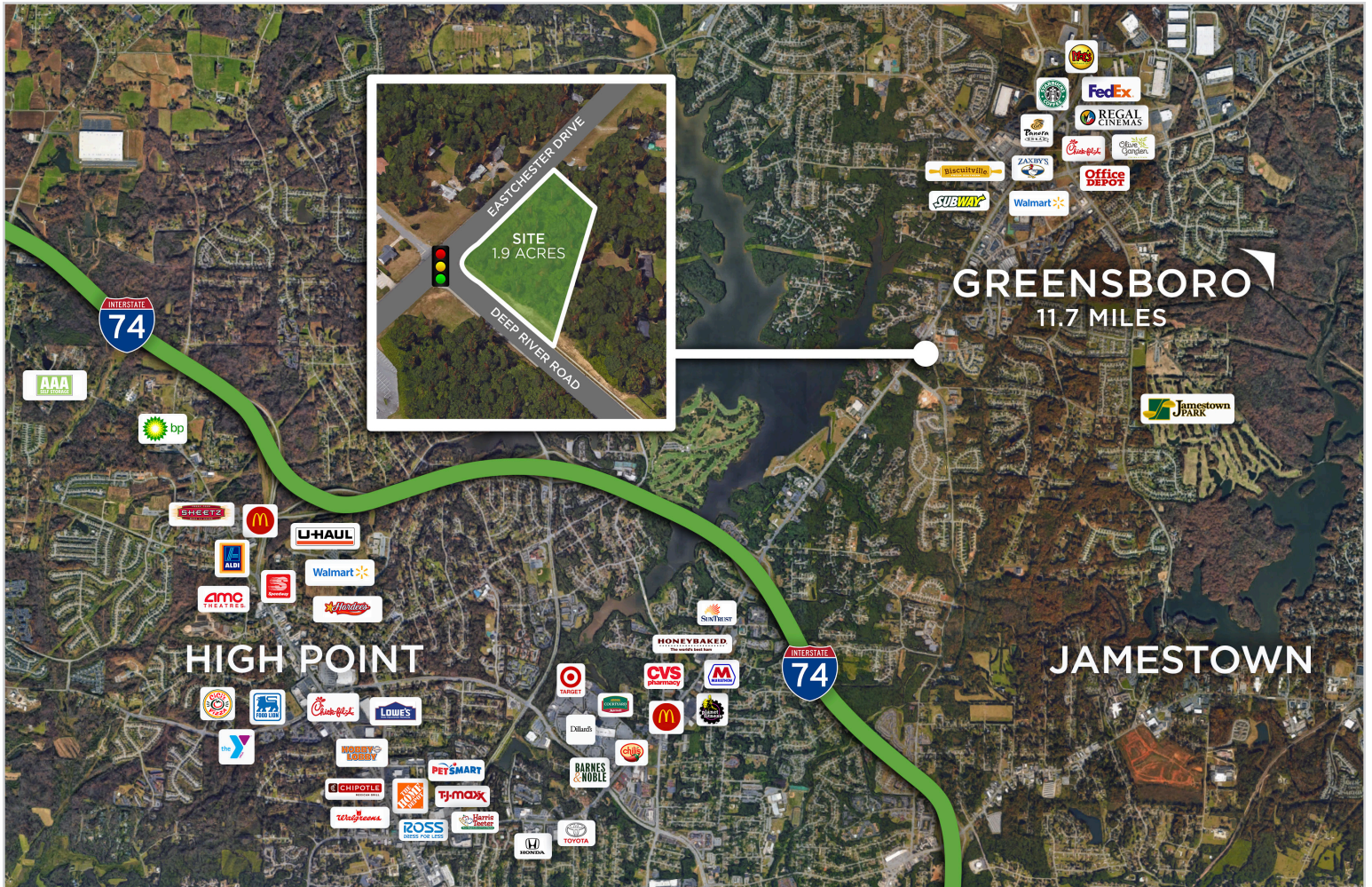
P 336.724.1715

1.9 Acres on Eastchester Drive

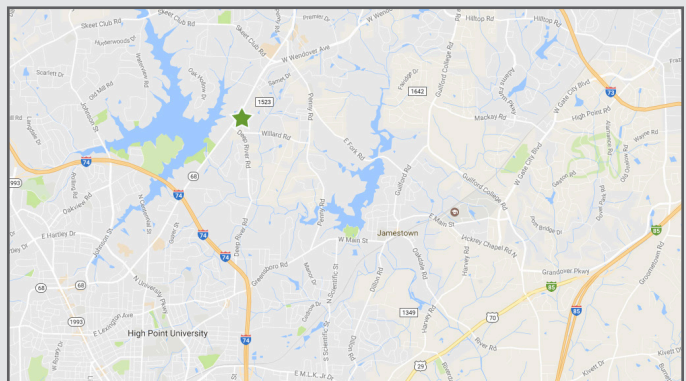
2004 EASTCHESTER DRIVE, HIGH POINT, NC 27265

LAND AVAILABLE FOR DEVELOPMENT

FOR SALE



- 1.9 acre tract of highly visible land located at the signalized corner of Eastchester Dr. and Deep River Rd.
- ±300 feet of Eastchester Drive road frontage, ideal for national and local retailers
- Conveniently located just a short distance from I-74
- All utilities available to site
- **Price: \$1,395,000**



1.9 Acres on Eastchester Drive

2004 EASTCHESTER DRIVE, HIGH POINT, NC 27265

LAND AVAILABLE FOR DEVELOPMENT

FOR SALE

KEY FACTS

52,960

Population



2.4

Average Household Size

40.9

Median Age

\$61,571

Median Household Income

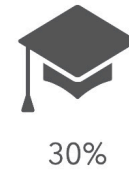
EDUCATION

7%

No High School Diploma



21%
High School Graduate



30%
Some College



42%
Bachelor's/Grad/Pr of Degree

BUSINESS



1,530

Total Businesses



19,752

Total Employees

EMPLOYMENT



72%

White Collar



17%

Blue Collar



11%

Services

11.1%

Unemployment Rate

INCOME



\$61,571

Median Household Income



\$34,286

Per Capita Income



\$107,361

Median Net Worth

Households By Income

The largest group: \$50,000 - \$74,999 (18%)

The smallest group: \$150,000 - \$199,999 (5.6%)

Indicator ▲	Value	Diff	
<\$15,000	7.7%	-3.8%	
\$15,000 - \$24,999	7.3%	-2.9%	
\$25,000 - \$34,999	10%	-0.7%	
\$35,000 - \$49,999	15.1%	+0.7%	
\$50,000 - \$74,999	18%	+0.5%	
\$75,000 - \$99,999	12.8%	+2%	
\$100,000 - \$149,999	17.6%	+3.6%	
\$150,000 - \$199,999	5.6%	+0.9%	
\$200,000+	6.1%	-0.1%	

3 MILE DEMOGRAPHICS

TO LEARN MORE ABOUT THIS PROPERTY, CONTACT:

Tommy Adams

Tommy@LTPcommercial.com

Nick Gonzalez

Nick@LTPcommercial.com

1.9 Acres on Eastchester Drive

2004 EASTCHESTER DRIVE, HIGH POINT, NC 27265

LAND AVAILABLE FOR DEVELOPMENT

FOR SALE

LOCATION					
Address	2004 Eastchester Drive, High Point, NC 27265			County	Guilford
PROPERTY DETAILS					
Property Type	Land	Acres	1.9	Frontage	300'
UTILITIES					
Electrical	To Site	Water/Sewer	To Site	Gas	To Site
TAX INFORMATION					
Zoning	Residential	Tax Map	7812	Tax PIN	7812068462
PRICING & TERMS					
Sales Price	\$1,395,000	Price/Acre	\$734,210.52		
Comments	<p>Situated at the signalized corner of Eastchester Drive (Highway 68) and Deep River Road, this highly visible 1.9 acre tract is ideal for national and local retailers alike. The site has ±300 feet of road frontage on both Eastchester Drive and Deep River Road. The property is a short distance from I-74. Water, sewer, and gas are all to the site. The adjoining 5.31 acres is also available.</p>				

The information contained herein has been taken from sources deemed to be reliable. Linville Team Partners makes no representation or warranties, expressed or implied, as to the accuracy of this information. All information in this document is subject to verification prior to purchase or lease.

TO LEARN MORE ABOUT THIS PROPERTY, CONTACT:

Tommy Adams

Tommy@LTPcommercial.com

Nick Gonzalez

Nick@LTPcommercial.com