

Outparcels Available in New 80-Acre Mixed-Use Development

KING'S CROSSING 105 MOORE ROAD, KING, NC 27021

OUTPARCELS AVAILABLE: 1.57 - 1.95 ACRES

FOR SALE



Three outparcels available to purchase located at the entrance to the much anticipated 80 acre mixed-use development, King's Crossing. Located in King, NC, these outparcels range from 1.57 acres to 1.95 acres and priced between \$400,000-\$600,000. This development will be anchored by a grocery store and plans to include shops, restaurants, medical office, service related retail, and a residential component with walking paths connecting the YMCA to Central Park. With only three outparcels available and priced to sell, these won't last long!

TO LEARN MORE ABOUT THIS PROPERTY CONTACT:



Ben Bloodworth

E Ben@LTPcommercial.com

M 336.655.1888

P 336.724.1715

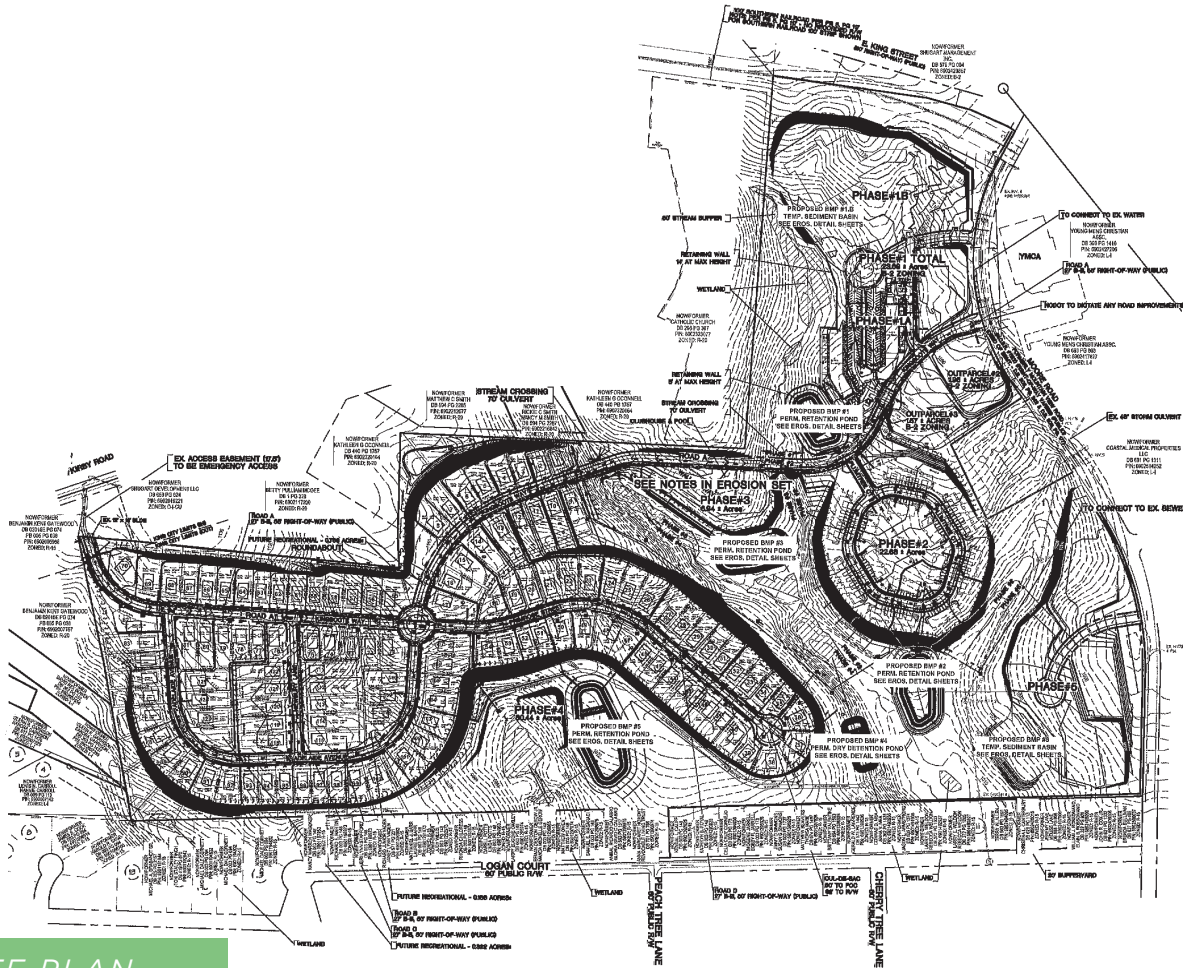
L | T

Outparcels Available in New 80-Acre Mixed-Use Development

KING'S CROSSING 105 MOORE ROAD, KING, NC 27021

OUTPARCELS AVAILABLE: 1.57 - 1.95 ACRES

FOR SALE



- 3 outparcels available to purchase located at the boulevard style entrance to the much anticipated new mixed-use development King's Crossing
- Parcels range from 1.57 Acres - 1.95 Acres
- Development will be anchored by a grocery store with plans to include shops, restaurants, medical offices service related retail and a residential component
- Sales Price: \$400,000 - \$600,000



Outparcels Available in New 80-Acre Mixed-Use Development

KING'S CROSSING 105 MOORE ROAD, KING, NC 27021

OUTPARCELS AVAILABLE: 1.57 - 1.95 ACRES

FOR SALE



RENDERINGS OF DEVELOPMENT PROVIDED BY ARCHITECTS



TO LEARN MORE ABOUT THIS PROPERTY, CONTACT:

Ben Bloodworth

Ben@LTPcommercial.com

Outparcels Available in New 80-Acre Mixed-Use Development

KING'S CROSSING 105 MOORE ROAD, KING, NC 27021

OUTPARCELS AVAILABLE: 1.57 - 1.95 ACRES

FOR SALE

LOCATION

Address 105 Moore Road, King, NC 27021

PROPERTY DETAILS

Property Type	Land	Property Subtype	Retail	Acres	1.57 - 1.95	Frontage
---------------	------	------------------	--------	-------	-------------	----------

UTILITIES

Electric		Water		Heat		Sewer
----------	--	-------	--	------	--	-------

TAX INFORMATION

Zoning		Tax PIN	6902427206	Tax Map		Tax Value
--------	--	---------	------------	---------	--	-----------

PRICING & TERMS

Sales Price	\$400,000 - \$1,600,000				
-------------	-------------------------	--	--	--	--

Comments Three outparcels available to purchase located at the entrance to the much anticipated 80 acre mixed-use development, King's Crossing. Located in King, NC, these outparcels range from 1.57 acres to 1.95 acres and priced between \$400,000-\$600,000. This development will be anchored by a grocery store and plans to include shops, restaurants, medical office, service related retail, and a residential component with walking paths connecting the YMCA to Central Park. With only three outparcels available and priced to sell, these won't last long!

The information contained herein has been taken from sources deemed to be reliable. Linville Team Partners makes no representation or warranties, expressed or implied, as to the accuracy of this information. All information in this document is subject to verification prior to purchase or lease.

TO LEARN MORE ABOUT THIS PROPERTY, CONTACT:

Ben Bloodworth
Ben@LTPcommercial.com