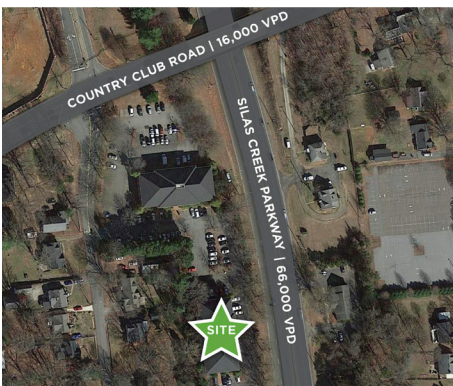


Park West Offices

4400 SILAS CREEK PARKWAY, WINSTON-SALEM, NC 27104

PROFESSIONAL OFFICE SPACE

FOR LEASE



±566 – 2,567 RSF of professional office space at the corner of Silas Creek Parkway and Country Club Road. Very good visibility, ample parking and a variety of floor plans make for a great leasing opportunity. Park West offers easy access to major thoroughfares including I-40, Hanes Mall Boulevard and Stratford Road. Key man suites available.

TO LEARN MORE ABOUT THIS PROPERTY CONTACT:



Aubrey Linville

E Aubrey@LTPcommercial.com
M 336.345.7300
P 336.724.1715



Jordan Cooper

E Jordan@LTPcommercial.com
M 303.717.3160
P 336.724.1715

Park West Offices

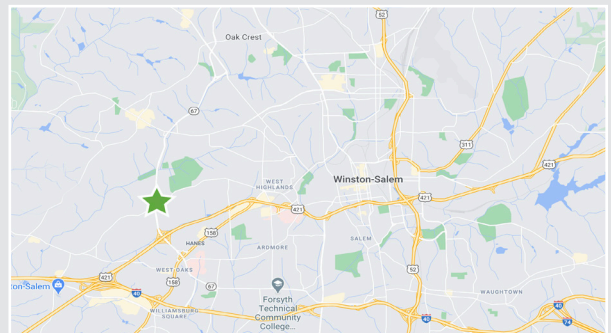
4400 SILAS CREEK PARKWAY, WINSTON-SALEM, NC 27104

PROFESSIONAL OFFICE SPACE

FOR LEASE



- Great visibility, ample parking and a variety of floor plans
- Located at the corner of Silas Creek Parkway and Country Club Road
- Easy access to I-40, Hanes Mall Boulevard and Stratford Road
- Key man suites available
- **Lease Rate: \$18.00, Full Service**



Park West Offices

4400 SILAS CREEK PARKWAY, WINSTON-SALEM, NC 27104

PROFESSIONAL OFFICE SPACE

FOR LEASE



TO LEARN MORE ABOUT THIS PROPERTY, CONTACT:

Aubrey Linville

Aubrey@LTPcommercial.com

Jordan Cooper

Jordan@LTPcommercial.com

Park West Offices

4400 SILAS CREEK PARKWAY, WINSTON-SALEM, NC 27104

PROFESSIONAL OFFICE SPACE

FOR LEASE

LOCATION

Address 4400 Silas Creek Parkway, Winston-Salem, NC 27104

PROPERTY DETAILS

Property Type	Office	Available SF ±	566 - 2,567	Parking	94 Surface Spaces	Year Built	1989
Acres	3	# Floors	3	Elevator	Yes	Year Renovated	2000

UTILITIES

Electrical	Duke	Water	City				
-------------------	------	--------------	------	--	--	--	--

TAX INFORMATION

Zoning	LO-S	Tax PIN	685-34-0744				
---------------	------	----------------	-------------	--	--	--	--

PRICING & TERMS

Lease Rate	\$18.00	Lease Type	Full Service				
-------------------	---------	-------------------	--------------	--	--	--	--

Comments ±566 – 2,567 RSF of professional office space at the corner of Silas Creek Parkway and Country Club Road. Very good visibility, ample parking and a variety of floor plans make for a great leasing opportunity. Park West offers easy access to major thoroughfares including I-40, Hanes Mall Boulevard and Stratford Road. Key man suites available.

The information contained herein has been taken from sources deemed to be reliable. Linville Team Partners makes no representation or warranties, expressed or implied, as to the accuracy of this information. All information in this document is subject to verification prior to purchase or lease.

TO LEARN MORE ABOUT THIS PROPERTY, CONTACT:

Aubrey Linville

Aubrey@LTPcommercial.com

Jordan Cooper

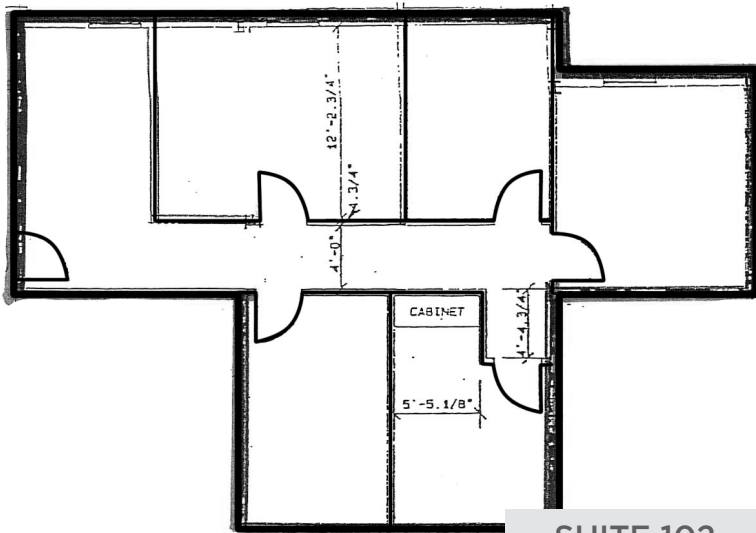
Jordan@LTPcommercial.com

Park West Offices

4400 SILAS CREEK PARKWAY, WINSTON-SALEM, NC 27104

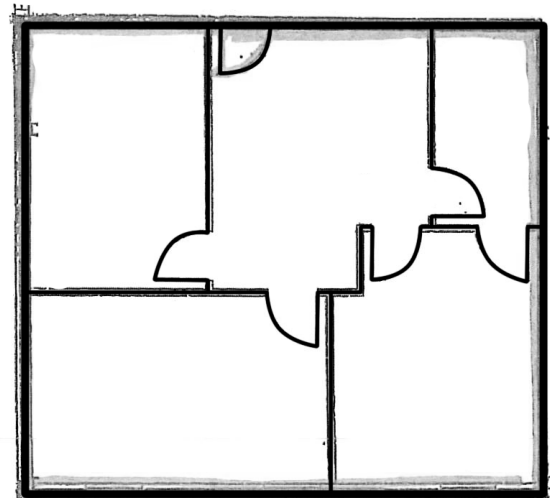
PROFESSIONAL OFFICE SPACE

FOR LEASE



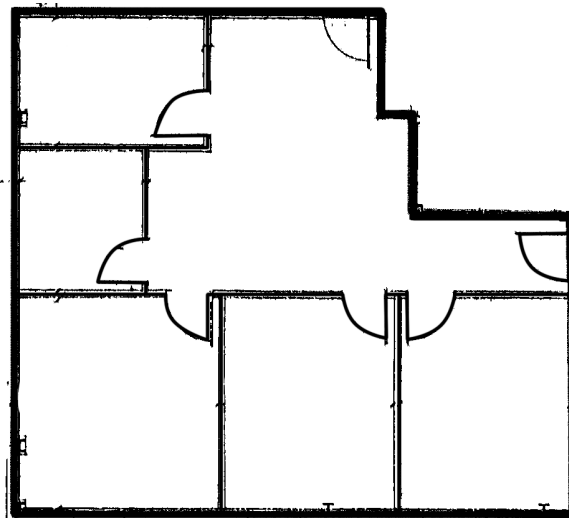
SUITE 102

±1,265 RSF AVAILABLE



SUITE 106

±1,067 RSF AVAILABLE



SUITE 104

±1,265 RSF AVAILABLE

TO LEARN MORE ABOUT THIS PROPERTY, CONTACT:

Aubrey Linville

Aubrey@LTPcommercial.com

Jordan Cooper

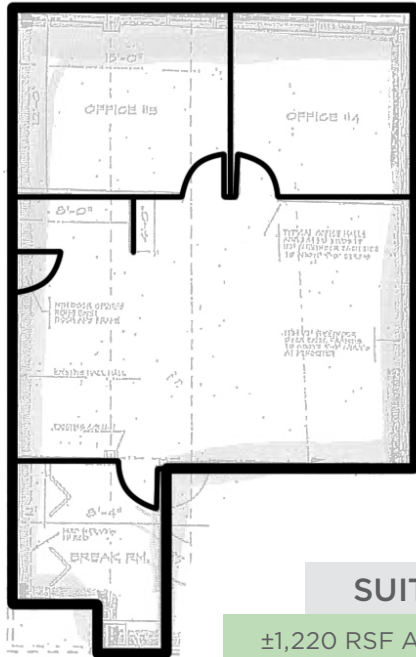
Jordan@LTPcommercial.com

Park West Offices

4400 SILAS CREEK PARKWAY, WINSTON-SALEM, NC 27104

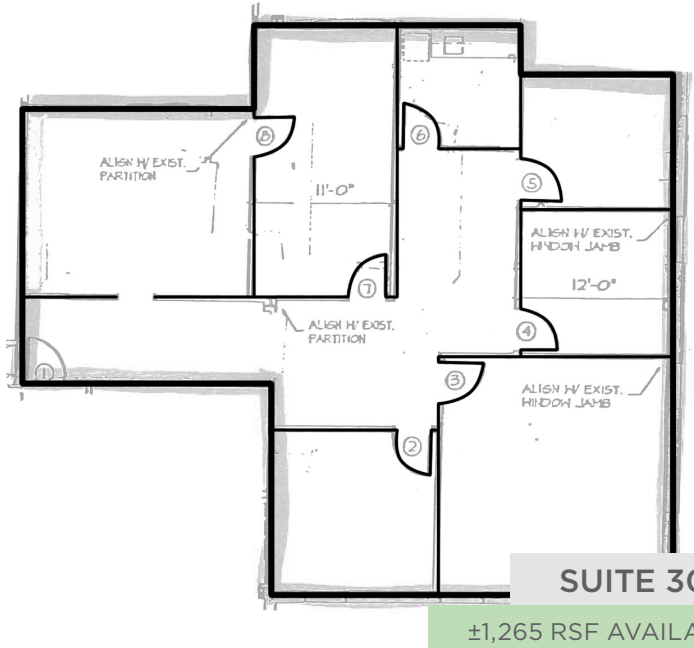
PROFESSIONAL OFFICE SPACE

FOR LEASE



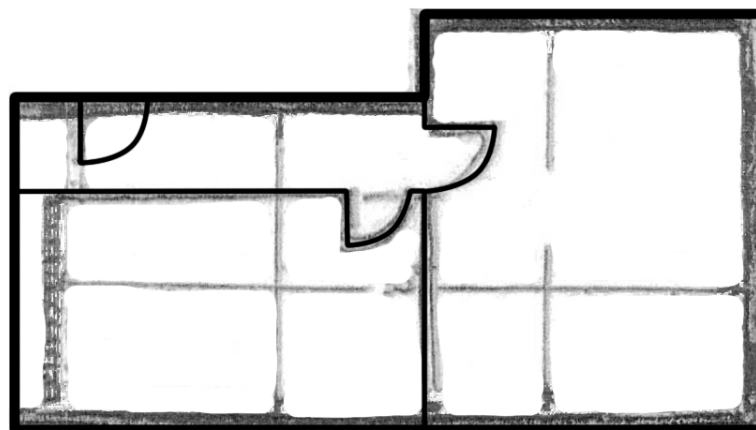
SUITE 108

±1,220 RSF AVAILABLE



SUITE 301

±1,265 RSF AVAILABLE



SUITE 304

±566 RSF AVAILABLE

TO LEARN MORE ABOUT THIS PROPERTY, CONTACT:

Aubrey Linville

Aubrey@LTPcommercial.com

Jordan Cooper

Jordan@LTPcommercial.com