

The Asheville Building

1500 PINECROFT ROAD, GREENSBORO, NC 27407

OFFICE SPACE AVAILABLE

FOR LEASE



±1,234-10,554 SF available office space located in the Asheville Building within the burgeoning West Greensboro office submarket. This site offers direct access to I-40, West Gate City Blvd., and South Holden Road. In close proximity to retail and restaurant options. This location also includes ample parking (600+ spaces), full-service lease options, functional floor plans that make for a great leasing opportunity, and several planned capital improvement projects. Variety of move-in ready spaces as well as shell spaces available for completely custom upfit.

LEARN MORE ABOUT THIS PROPERTY



Will Blackwell

E Will@LTPcommercial.com

M 336.345.1500

P 336.724.1715



Nick Gonzalez

E Nick@LTPcommercial.com

M 336.448.2833

P 336.724.1715

The Asheville Building

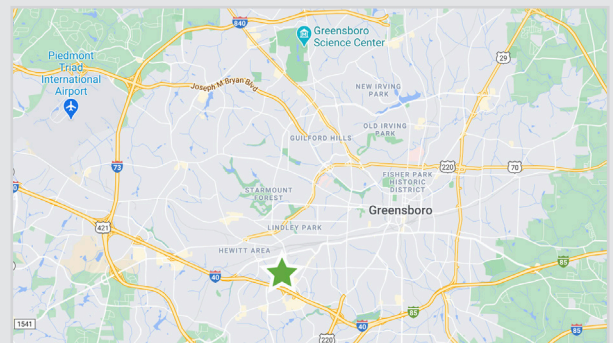
1500 PINECROFT ROAD, GREENSBORO, NC 27407

OFFICE SPACE AVAILABLE

FOR LEASE



- ±1,234-10,554 SF available office space
- Located in the burgeoning West Greensboro office submarket, in close proximity to retail and restaurant options
- Includes ample parking spaces (600+ spaces), full-service lease options and functional floor plans
- Variety of move-in ready spaces as well as shell spaces available for a completely custom upfit
- Pricing: \$13.95psf, Full Service

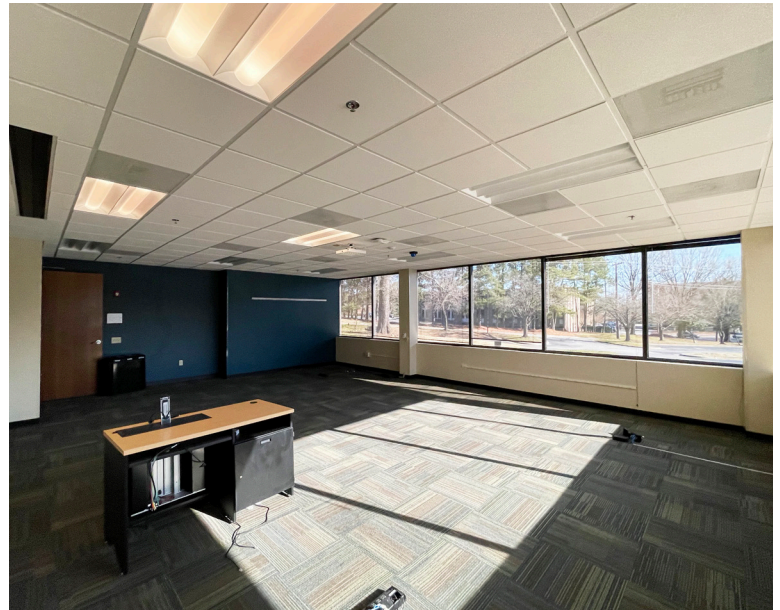


The Asheville Building

1500 PINECROFT ROAD, GREENSBORO, NC 27407

OFFICE SPACE AVAILABLE

FOR LEASE



TO LEARN MORE ABOUT THIS PROPERTY, CONTACT:

Will Blackwell

Will@LTPcommercial.com

Nick Gonzalez

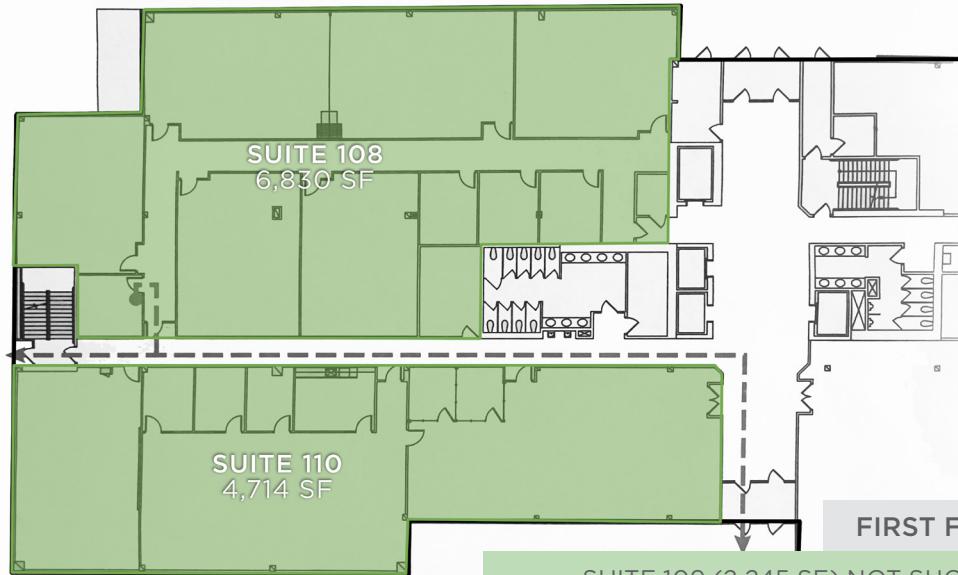
Nick@LTPcommercial.com

The Asheville Building

1500 PINECROFT ROAD, GREENSBORO, NC 27407

OFFICE SPACE AVAILABLE

FOR LEASE



AVAILABLE SPACE

Suite 108	6,830 SF
Suite 109	2,245 SF
Suite 110	4,714 SF
Suite 235	1,234 SF
Suite 400	10,554 SF
Suite 401	7,503 SF



TO LEARN MORE ABOUT THIS PROPERTY, CONTACT:

Will Blackwell

Will@LTPcommercial.com

Nick Gonzalez

Nick@LTPcommercial.com

The Asheville Building

1500 PINECROFT ROAD, GREENSBORO, NC 27407

OFFICE SPACE AVAILABLE

FOR LEASE



2021 PROPERTY IMPROVEMENTS PLANNED:

- COMMON AREA FURNITURE UPGRADE
- LANDSCAPING UPGRADE & OVERHAUL
- SEAL COATING/RESTRIPING PARKING LOTS
- UPDATED SIGNAGE
- EXTERIOR BUILDING LIGHTING UPGRADES
- INTERIOR PAINT, LIGHT FIXTURE & RESTROOM UPGRADES
- MOVE-IN READY OR CUSTOM BUILD OUT AVAILABLE!

LOCATION

Address 1500 Pincroft Road, Greensboro, NC 27407

PROPERTY DETAILS

Property Type	Office	Office SF ±	1,234 - 10,554	Year Built	1988	Parking	Surface
Acres	8.01	Building SF ±	134,464	Year Renovated	1997/2018	Property Class	

PRICING & TERMS

Lease Rate	\$13.95	Lease Type	Full Service	Terms	
------------	---------	------------	--------------	-------	--

The information contained herein has been taken from sources deemed to be reliable. Linville Team Partners makes no representation or warranties, expressed or implied, as to the accuracy of this information. All information in this document is subject to verification prior to purchase or lease.

TO LEARN MORE ABOUT THIS PROPERTY, CONTACT:

Will Blackwell
Will@LTPcommercial.com

Nick Gonzalez
Nick@LTPcommercial.com