

**118 BURKE STREET &  
313 E. BODENHAMER STREET**  
FOR SALE | KERNERSVILLE, NC 27284

**Linville** | *Team Partners*  
COMMERCIAL REAL ESTATE



**HOSIERY MILL CAMPUS FOR SALE**

## PROPERTY HIGHLIGHTS

PROPERTY TYPE	Flex, Retail
AVAILABLE SF ±	96,842
SALE PRICE	\$3,995,000

## DESCRIPTION

**Warehouse or campus redevelopment opportunity.** ±92,048 SF hosiery mill, ±2,800 SF warehouse/workshop, and ±1,994 SF single family house. Property can be subdivided to accommodate various tenants or suitable for redevelopment. Property features ample parking (front and back), visibility on East Bodenhamer Street (16,000 VPD), and historical mill features. Fully sprinklered, 3 elevators, and heavy power.



**NICK GONZALEZ**

**E** Nick@LTPcommercial.com

**M** 305.979.3440

**P** 336.724.1715

**L | T**



**118 BURKE STREET &  
313 E. BODENHAMER STREET**  
FOR SALE | KERNERSVILLE, NC 27284

**Linville** | *Team Partners*  
COMMERCIAL REAL ESTATE



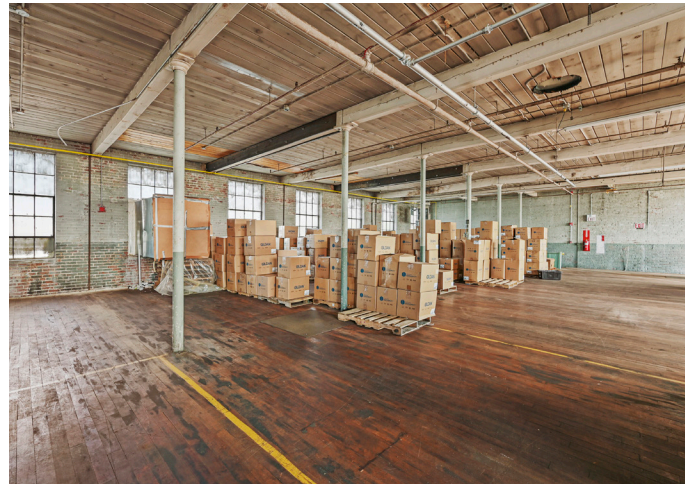
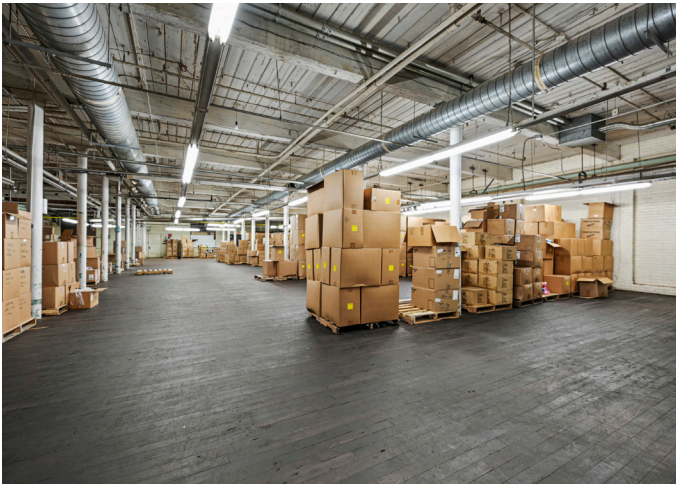
**L | T**

206 W. FOURTH STREET • WINSTON-SALEM • NORTH CAROLINA • 27101  
LTPCOMMERCIAL.COM • 336.724.1715



**118 BURKE STREET &  
313 E. BODENHAMER STREET**  
FOR SALE | KERNERSVILLE, NC 27284

**Linville** | *Team Partners*  
COMMERCIAL REAL ESTATE



206 W. FOURTH STREET • WINSTON-SALEM • NORTH CAROLINA • 27101  
LTPCOMMERCIAL.COM • 336.724.1715



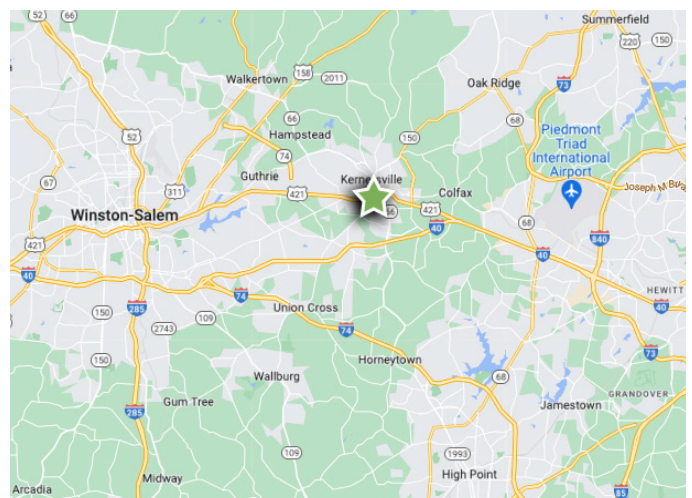
**118 BURKE STREET &  
313 E. BODENHAMER STREET**  
FOR SALE | KERNERSVILLE, NC 27284

**Linville** | *Team Partners*  
COMMERCIAL REAL ESTATE



## KEY FEATURES

- ±92,048 SF hosiery mill, ±2,800 SF warehouse/workshop, and ±1,994 SF single family house
- Can be subdivided to accommodate various tenants or suitable for redevelopment
- Ample parking (front and back)
- Visibility on East Bodenhamer Street (16,000 VPD)
- **Sale Price: \$3,995,000**



206 W. FOURTH STREET • WINSTON-SALEM • NORTH CAROLINA • 27101  
LTPCOMMERCIAL.COM • 336.724.1715





## PROPERTY INFORMATION

PROPERTY TYPE	Flex, Retail	PARKING	±75 surface + overflow
AVAILABLE SF ±	96,842	DOCK DOORS	7
ACRES	4.62	FIRST FLOOR SF ±	23,116
YEAR BUILT	1918	SECOND FLOOR SF ±	61,676
ZONING	GB	THIRD FLOOR SF ±	7,256

## PRICING & TERMS

SALE PRICE	\$3,995,000
------------	-------------

## DESCRIPTION

**Warehouse or campus redevelopment opportunity.** ±92,048 SF hosiery mill, ±2,800 SF warehouse/workshop, and ±1,994 SF single family house. Property can be subdivided to accommodate various tenants or suitable for redevelopment. Property features ample parking (front and back), visibility on East Bodenhamer Street (16,000 VPD), and historical mill features. Fully sprinklered, 3 elevators, and heavy power.

The information contained herein has been taken from sources deemed to be reliable. Linville Team Partners makes no representation or warranties, expressed or implied, as to the accuracy of this information. All information in this document is subject to verification prior to purchase or lease.