

4327 S. ELM-EUGENE STREET

FOR SALE | GREENSBORO, NC 27406

Linville | Team Partners

COMMERCIAL REAL ESTATE



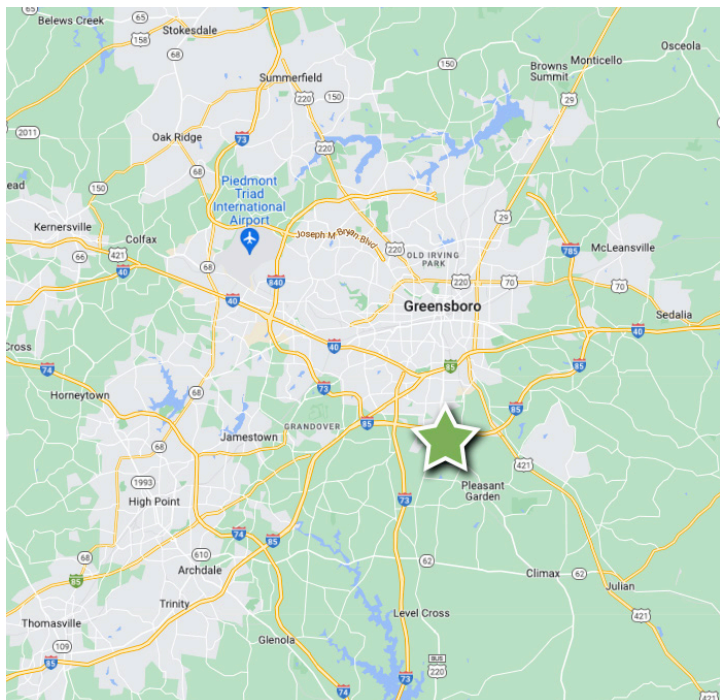
RESIDENTIAL LAND FOR SALE

PROPERTY HIGHLIGHTS

PROPERTY TYPE	Land, Residential, Recreational
ACRES ±	18.20
SALE PRICE	\$1,000,000

DESCRIPTION

±18.20 acres of residential zoned land on South Elm-Eugene Street in Southern Greensboro, NC. The parcel is conveniently located 1.5 miles from Walmart and many retailers. The property features 2 private lakes. The site is less than 1 mile from I-85 and only 15 minutes from proposed Toyota megasite.



PHIL TOCKMAN

E Phil@LTPcommercial.com

M 336.987.0808

P 336.724.1715

NICK GONZALEZ

E Nick@LTPcommercial.com

M 305.979.3440

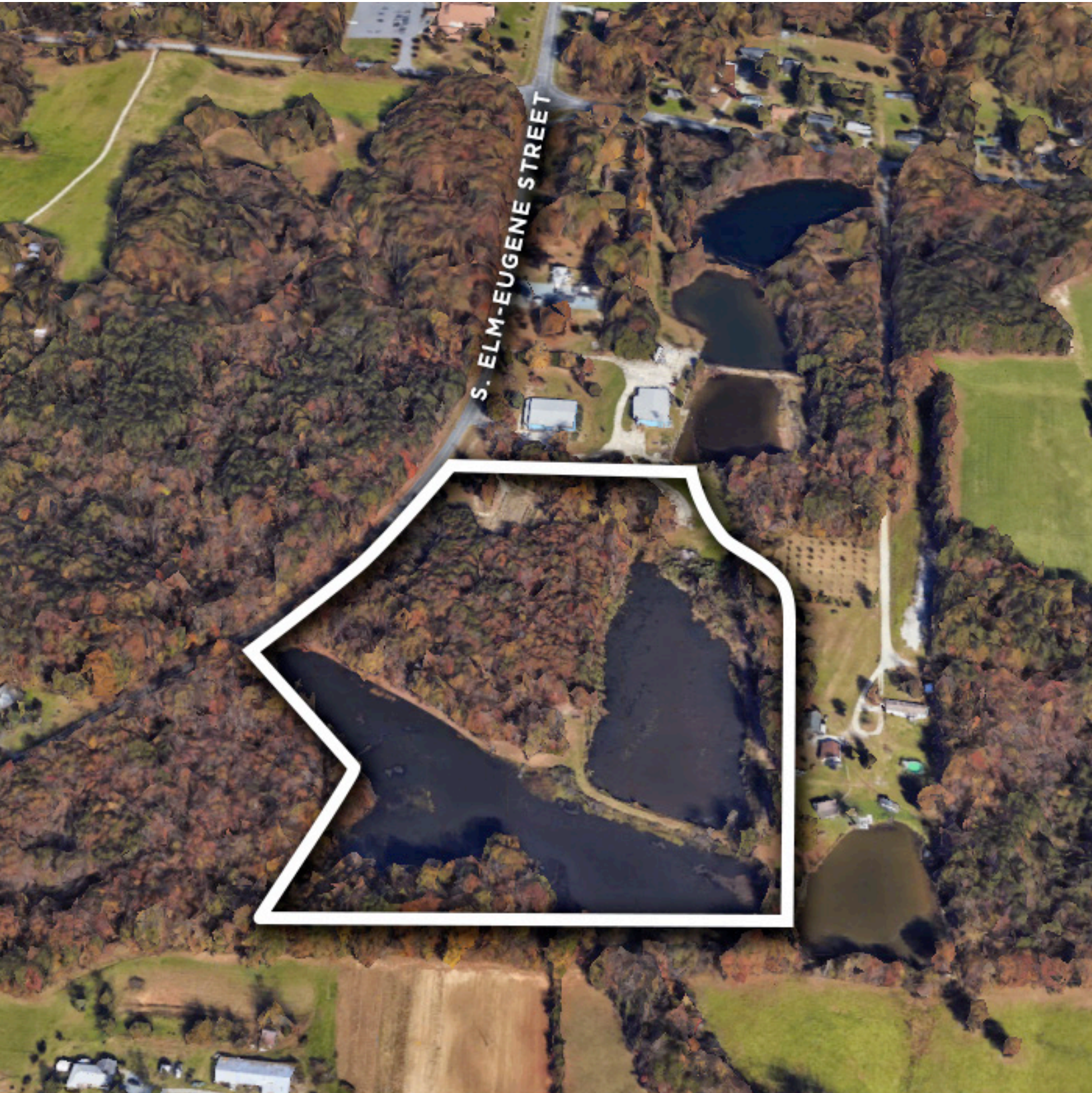
P 336.724.1715

4327 S. ELM-EUGENE STREET

FOR SALE | GREENSBORO, NC 27406

Linville | Team Partners

COMMERCIAL REAL ESTATE



206 W. FOURTH STREET • WINSTON-SALEM • NORTH CAROLINA • 27101

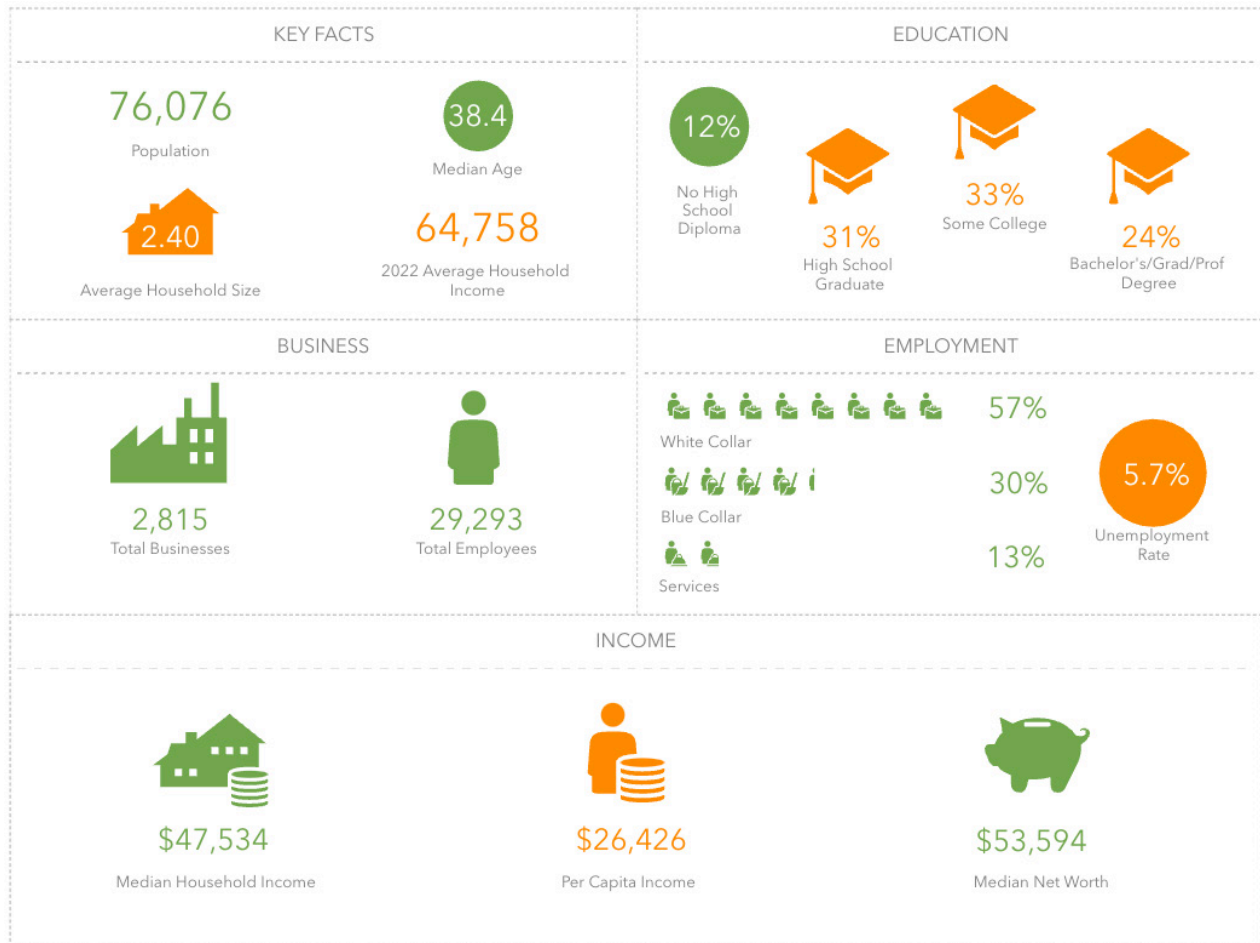
LTPCOMMERCIAL.COM • 336.724.1715

4327 S. ELM-EUGENE STREET

FOR SALE | GREENSBORO, NC 27406

Linville | Team Partners

COMMERCIAL REAL ESTATE



PROPERTY INFORMATION

PROPERTY TYPE	Land	PROPERTY SUBTYPE	Residential
ACRES ±	18.20	TAX PIN	7861-55-1198

PRICING & TERMS

SALE PRICE	\$1,000,000
------------	-------------

DESCRIPTION

±18.20 acres of residential zoned land on South Elm-Eugene Street in Southern Greensboro, NC. The parcel is conveniently located 1.5 miles from Walmart and many retailers. The property features 2 private lakes. The site is less than 1 mile from I-85 and only 15 minutes from proposed Toyota megasite.

The information contained herein has been taken from sources deemed to be reliable. Linville Team Partners makes no representation or warranties, expressed or implied, as to the accuracy of this information. All information in this document is subject to verification prior to purchase or lease.



206 W. FOURTH STREET • WINSTON-SALEM • NORTH CAROLINA • 27101
LTPCOMMERCIAL.COM • 336.724.1715