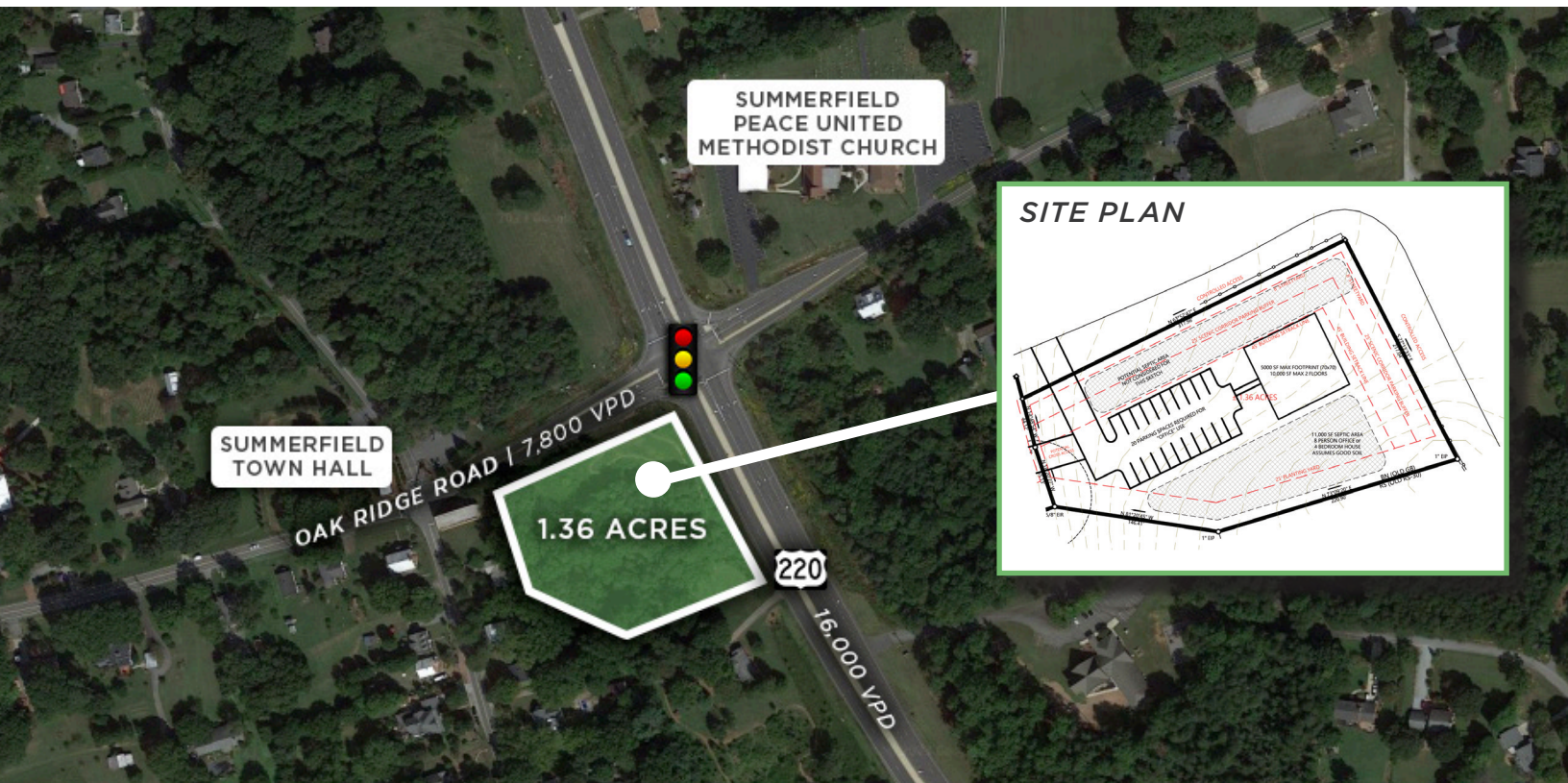


±1.36 ACRES FOR SALE

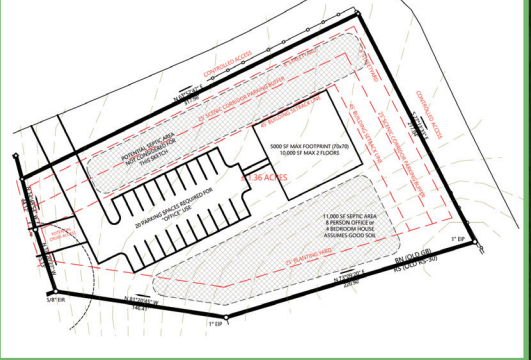
4963-4999 US HIGHWAY 220, SUMMERFIELD, NC 27358

Linville | Team Partners

COMMERCIAL REAL ESTATE



SITE PLAN

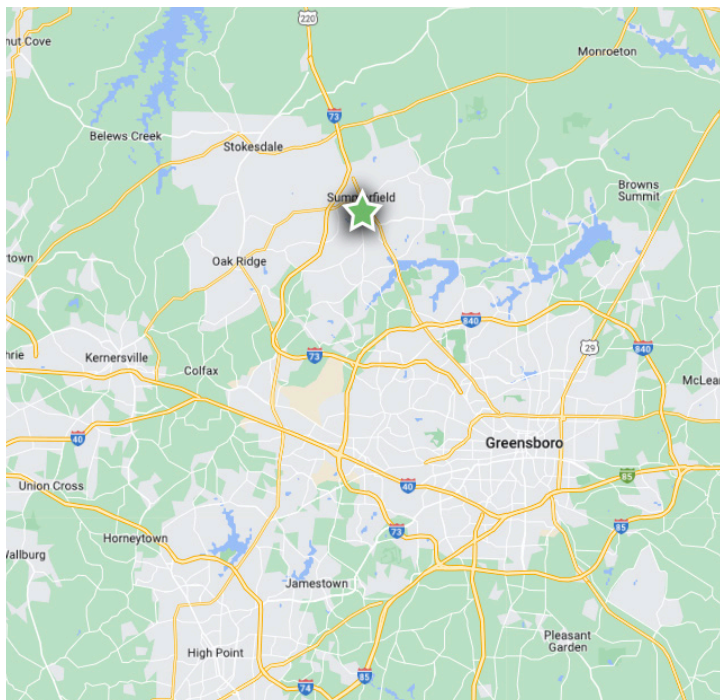


PROPERTY HIGHLIGHTS

PROPERTY TYPE	Land
ACRES ±	1.36
SALE PRICE	\$895,000

DESCRIPTION

±1.36 acres of commercial zoned land with great visibility on the corner of Oak Ridge Road and US Highway 220 in Summerfield, NC. Guilford county plans to add sewer and water access within the next few years. With 16,000 VPD currently, this site would be ideal for many major retailers. Extremely high income demographics in high growth market.



NICK GONZALEZ

E Nick@LTPcommercial.com

P 336.724.1715

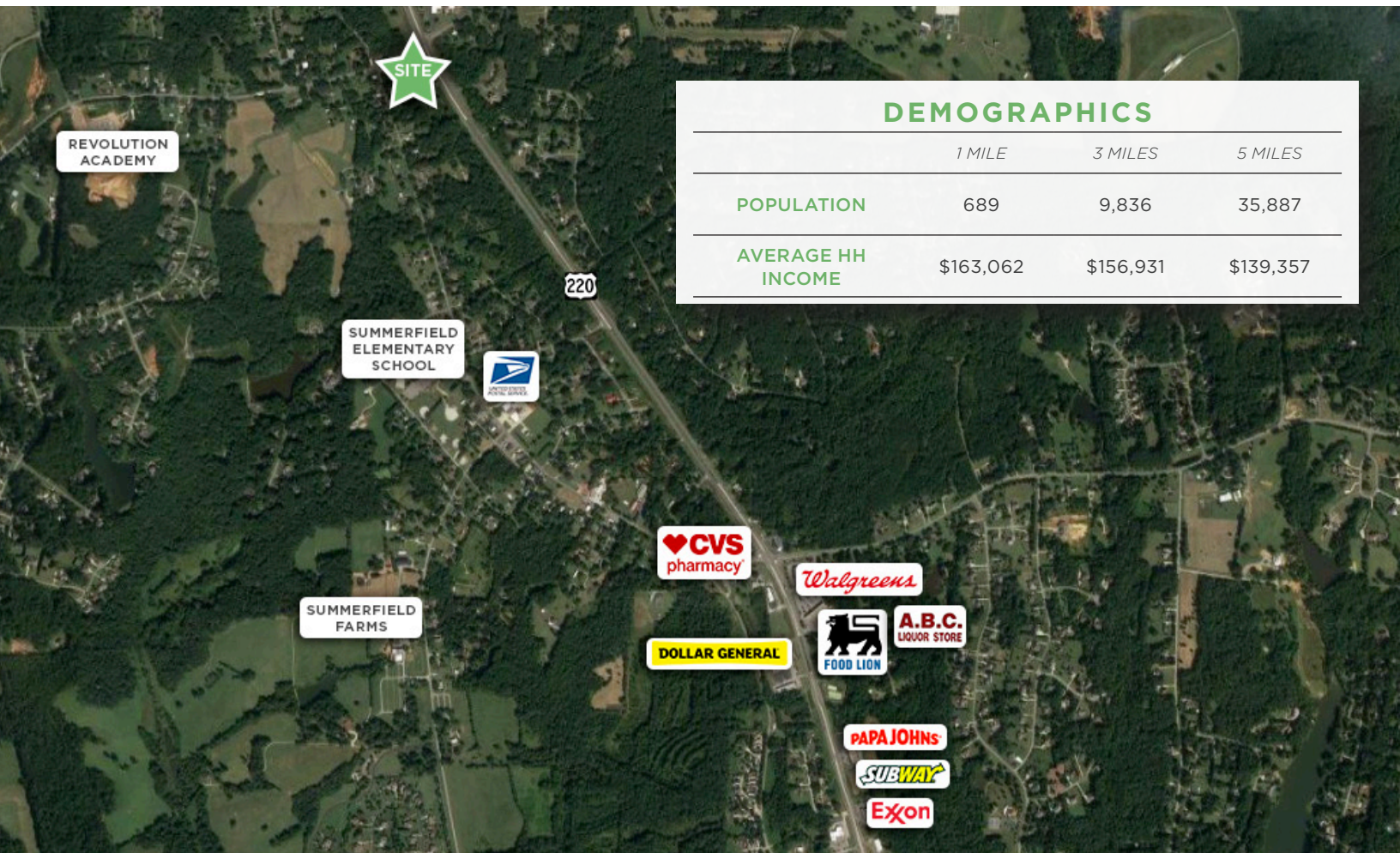
L | T

±1.36 ACRES FOR SALE

4963-4999 US HIGHWAY 220, SUMMERFIELD, NC 27358

Linville | Team Partners

COMMERCIAL REAL ESTATE



DEMOGRAPHICS

	1 MILE	3 MILES	5 MILES
POPULATION	689	9,836	35,887
AVERAGE HH INCOME	\$163,062	\$156,931	\$139,357

PROPERTY INFORMATION

PROPERTY TYPE	Land	ZONING	Commercial
ACRES ±	1.36	TAX MAP	7839-35-0920

PRICING & TERMS

SALE PRICE	\$895,000
------------	-----------

DESCRIPTION

±1.36 acres of commercial zoned land with great visibility on the corner of Oak Ridge Road and US Highway 220 in Summerfield, NC. Guilford county plans to add sewer and water access within the next few years. With 16,000 VPD currently, this site would be ideal for many major retailers. Extremely high income demographics in high growth market.

The information contained herein has been taken from sources deemed to be reliable. Linville Team Partners makes no representation or warranties, expressed or implied, as to the accuracy of this information. All information in this document is subject to verification prior to purchase or lease.



206 W. FOURTH STREET • WINSTON-SALEM • NORTH CAROLINA • 27101

LTPCOMMERCIAL.COM • 336.724.1715