

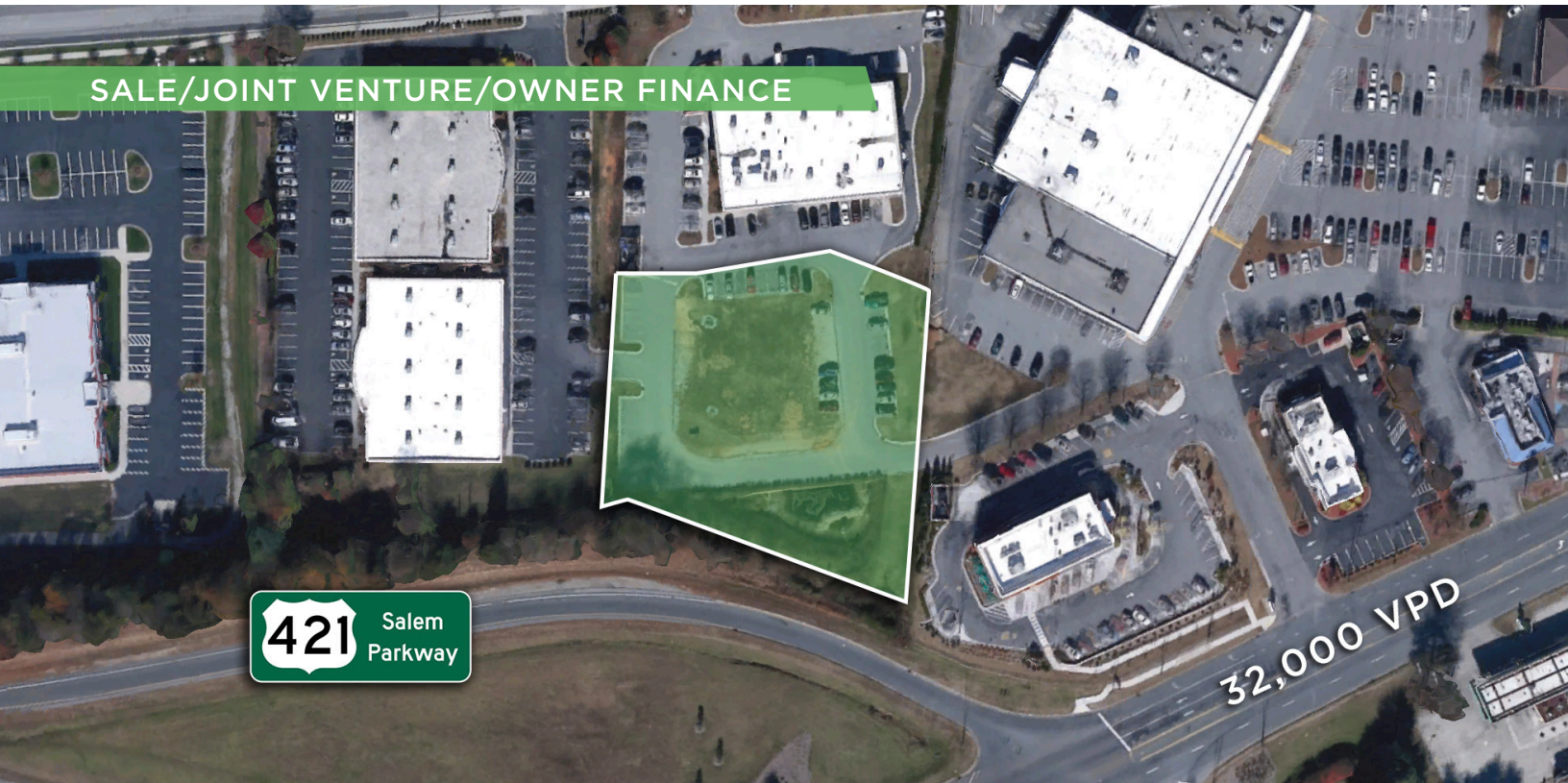
843 OLD WINSTON ROAD

FOR SALE | KERNERSVILLE, NC 27284

Linville | Team Partners

COMMERCIAL REAL ESTATE

SALE/JOINT VENTURE/OWNER FINANCE



PROPERTY HIGHLIGHTS

PROPERTY TYPE	Land
ACRES ±	1.24
SALE PRICE	\$450,000

DESCRIPTION

GB-S zoned developable land centrally located in Kernersville. Directly behind J. Pepper's Southern Grille and Kernersville Pharmacy, this ±1.24 acre parcel would be suitable for any range of office, medical, retail, and light industrial uses. Potential for desirable signage visibility on US-421/Salem Parkway. Owner is open to a sale, joint venture, or owner-financing with acceptable terms and price.



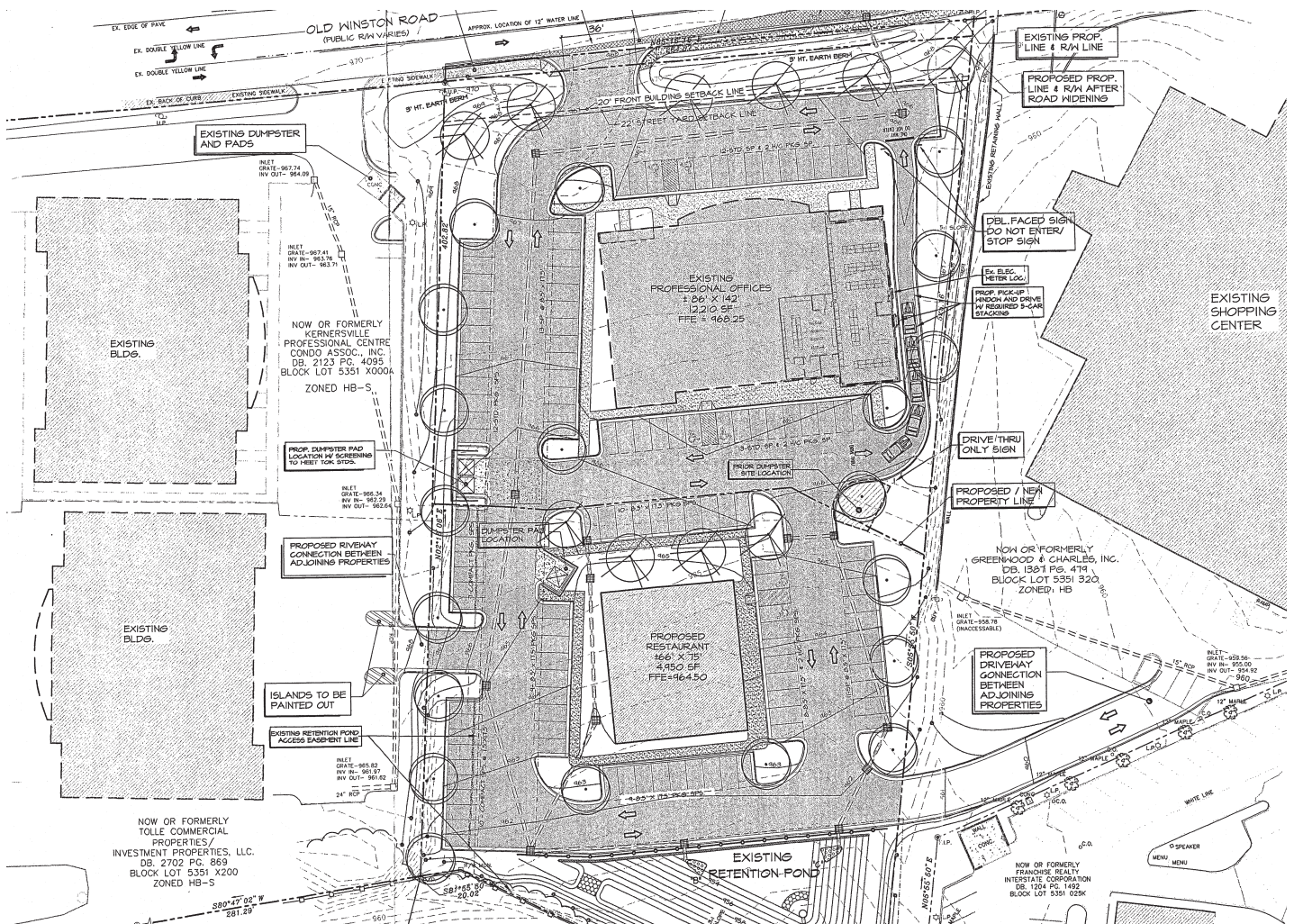
NICK GONZALEZ

E Nick@LTPcommercial.com

P 336.724.1715

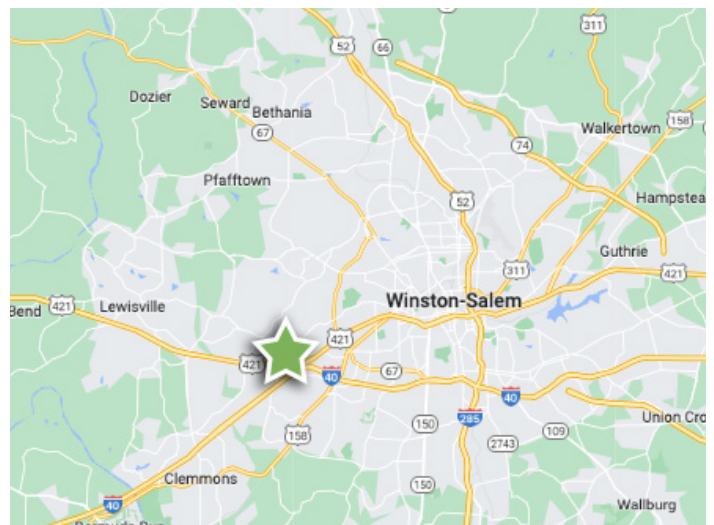
L | T

SITE PLAN



KEY FEATURES

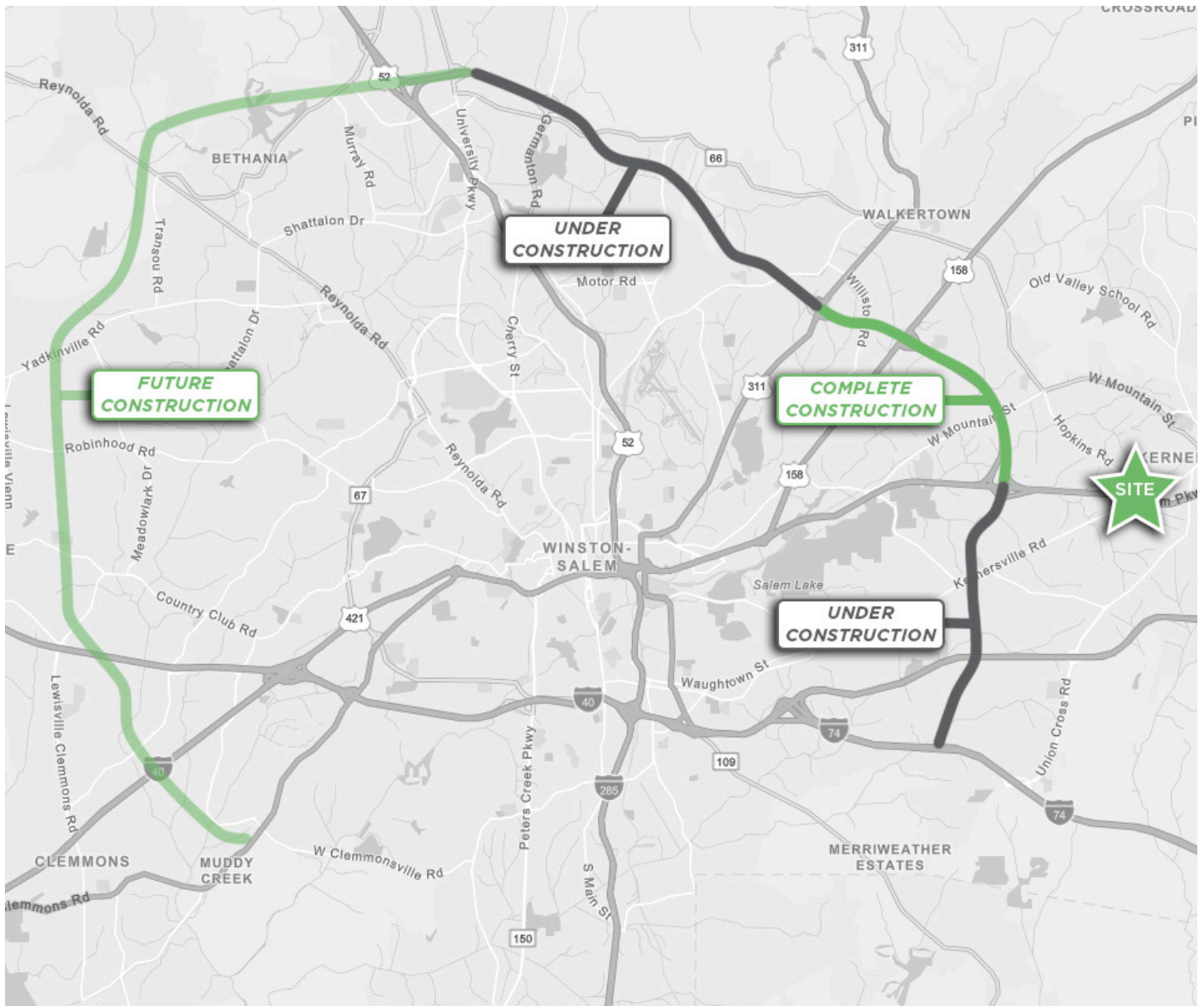
- GB-S zoned developable land
- Centrally located in Kernersville
- ±1.24 acre parcel would be suitable for any range of office, medical, retail, and light industrial uses
- Potential for desirable signage visibility on US-421/Salem Parkway
- 32,000 VPD



WINSTON-SALEM NORTHERN BELTWAY

The N.C. Department of Transportation is building a multi-lane freeway that loops around the northern part of Winston-Salem. The 34.5-mile Winston-Salem Northern Beltway will begin at U.S. 158 southwest of Winston-Salem and end at I-74 southeast of the city.

Over 100,000 vehicles and trucks travel through the area every day, which is more traffic than the roadways in the area are designed to handle. The Winston-Salem Northern Beltway will help alleviate traffic congestion and improve safety along heavily traveled routes in Forsyth County, including U.S. 421/Salem Parkway and U.S. 52.



843 OLD WINSTON ROAD

FOR SALE | KERNERSVILLE, NC 27284

Linville | Team Partners

COMMERCIAL REAL ESTATE



PROPERTY INFORMATION

PROPERTY TYPE	Land	ZONING	GB-S
ACRES ±	1.24	PIN	6876-71-8370

PRICING & TERMS

SALE PRICE	\$450,000
------------	-----------

DESCRIPTION

GB-S zoned developable land centrally located in Kernersville. Directly behind J. Pepper's Southern Grille and Kernersville Pharmacy, this ±1.24 acre parcel would be suitable for any range of office, medical, retail, and light industrial uses. Potential for desirable signage visibility on US-421/Salem Parkway. Owner is open to a sale, joint venture, or owner-financing with acceptable terms and price.

The information contained herein has been taken from sources deemed to be reliable. Linville Team Partners makes no representation or warranties, expressed or implied, as to the accuracy of this information. All information in this document is subject to verification prior to purchase or lease.



206 W. FOURTH STREET • WINSTON-SALEM • NORTH CAROLINA • 27101

LTPCOMMERCIAL.COM • 336.724.1715