

±1.42 ACRES FOR SALE

CLOVER STREET, MOORESVILLE, NC 28115

Linville | Team Partners

COMMERCIAL REAL ESTATE

MULTI-FAMILY DEVELOPMENT IN MOORESVILLE OVERLOOKING LIBERTY PARK

SALE, JOINT VENTURE,
OWNER FINANCE

LIBERTY
PARK

Est. 2021
MILL ONE
Mooreville

SITE

PROPERTY HIGHLIGHTS

PROPERTY TYPE Land, Multi-family

ACRES ± 1.42

SALE PRICE \$2,912,000

DESCRIPTION

Entitled and site plan approved with the Mooresville Unified Development Ordinance (UDO), this multifamily development opportunity offers many desirable amenities. You won't find a more desirable location in Mooresville- one block from downtown N. Main Street overlooking Liberty Park. This project features 92 units with onsite parking. Multiple points of ingress/egress from N. Church Street and E. Iredell Avenue. Site is within the Mooresville Graded School District, which is a top ranked district in North Carolina, and across the street from Mill One and Liberty Park. Owner will sell, joint venture, or owner finance.



Total Population
54,578



8 Year Population Growth
43.24%



Average Household Income
\$101,643



Household Type: Renters
40.7%

NICK GONZALEZ

E Nick@LTPcommercial.com

P 336.724.1715

L | T

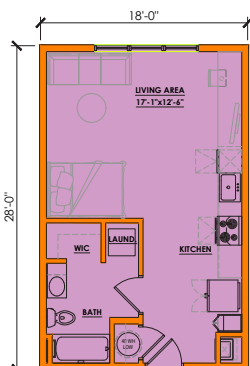
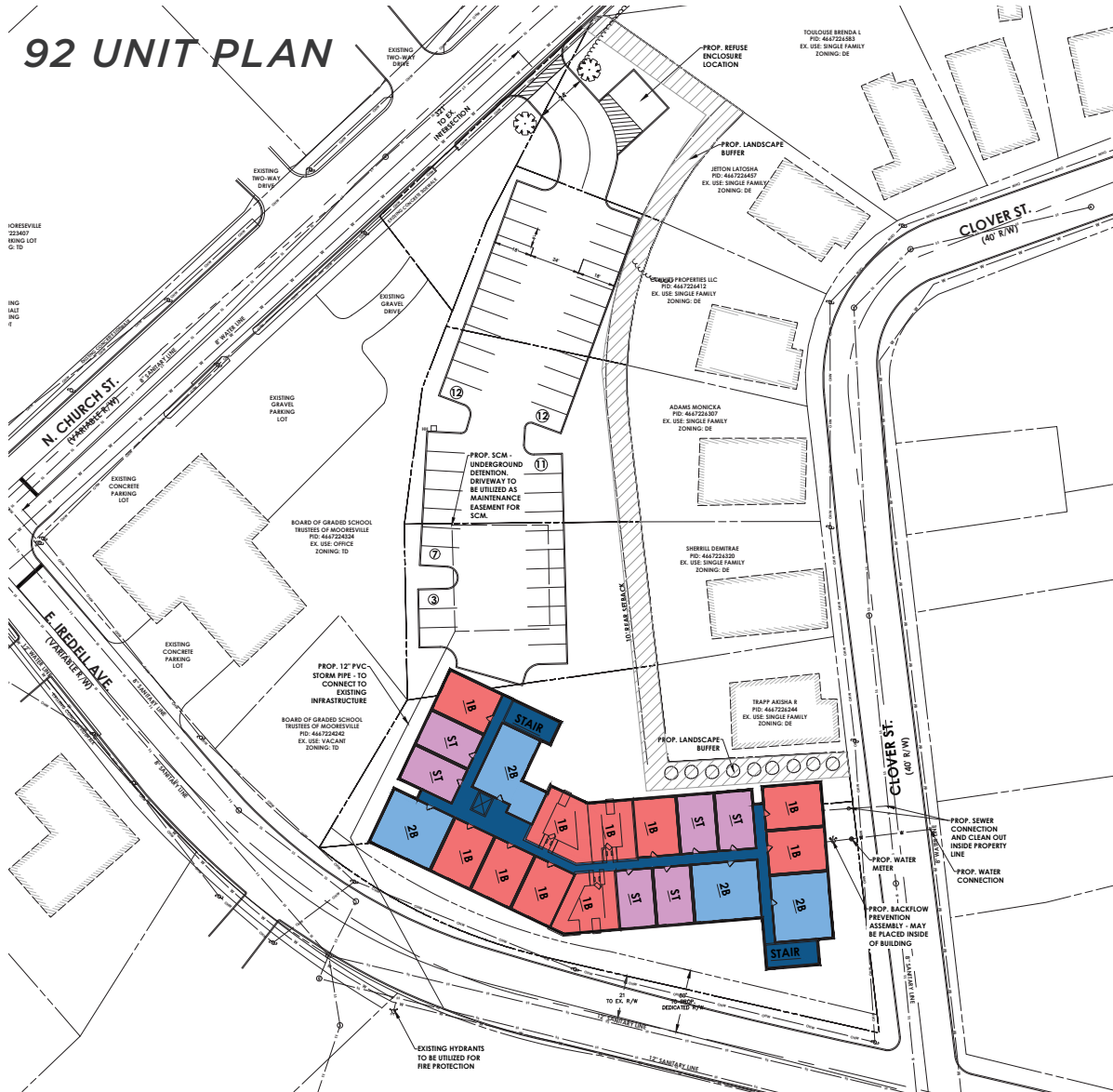
±1.42 ACRES FOR SALE

CLOVER STREET, MOORESVILLE, NC 28115

Linville | Team Partners

COMMERCIAL REAL ESTATE

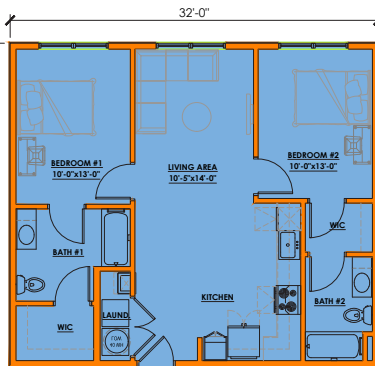
92 UNIT PLAN



S1 UNIT PLAN

1 BED/1 BA.

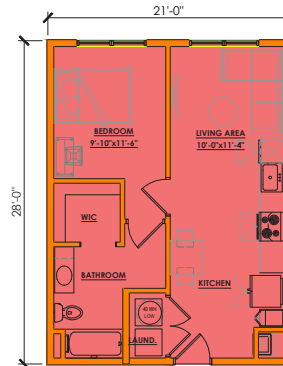
504 NET RENTABLE SF



B1 UNIT PLAN

2 BED/2 BA.

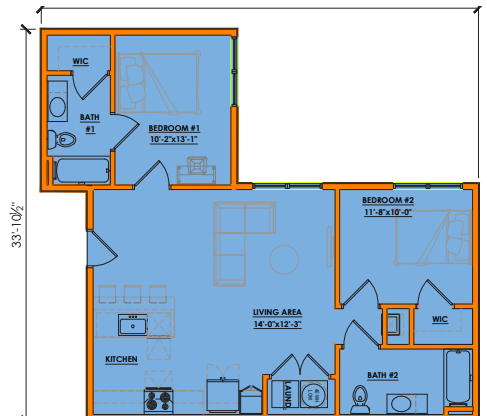
896 NET RENTABLE SF



A1 UNIT PLAN

1 BED/1 BA.

588 NET RENTABLE SF



B2 UNIT PLAN

2 BED/2 BA.

927 NET RENTABLE SF

L T

206 W. FOURTH STREET • WINSTON-SALEM • NORTH CAROLINA • 27101

LTPCOMMERCIAL.COM • 336.724.1715

±1.42 ACRES FOR SALE

CLOVER STREET, MOORESVILLE, NC 28115

Linville | Team Partners

COMMERCIAL REAL ESTATE

PROPERTY AERIAL PHOTOS



L T

206 W. FOURTH STREET • WINSTON-SALEM • NORTH CAROLINA • 27101

LTPCOMMERCIAL.COM • 336.724.1715

±1.42 ACRES FOR SALE

CLOVER STREET, MOORESVILLE, NC 28115

Linville | Team Partners

COMMERCIAL REAL ESTATE

LIBERTY PARK - ADJACENT TO PROPERTY



L T

206 W. FOURTH STREET • WINSTON-SALEM • NORTH CAROLINA • 27101

LTPCOMMERCIAL.COM • 336.724.1715

±1.42 ACRES FOR SALE

CLOVER STREET, MOORESVILLE, NC 28115

Linville | Team Partners

COMMERCIAL REAL ESTATE



MOORESVILLE, NORTH CAROLINA

Mooresville is located in the southwestern section of Iredell County, North Carolina, and is a part of the fast-growing Charlotte metropolitan area. The city is the most populous municipality in Iredell County. It is located approximately 25 miles north of Charlotte. Mooresville is the corporate headquarters of Lowe's Companies, Inc., one of the largest home improvement retailers in the world. Lowe's has a significant presence in the town, employing thousands of residents and contributing to the local economy. Mooresville is also known as the home of many NASCAR racing teams and drivers, along with an IndyCar team and its drivers, as well as racing technology suppliers. Mooresville is situated on the shores of Lake Norman, a large man-made lake created by the construction of the Cowans Ford Dam on the Catawba River. Lake Norman offers various recreational activities, including boating, fishing, and water sports, and it attracts many visitors and residents who enjoy its scenic beauty.



L | T

206 W. FOURTH STREET • WINSTON-SALEM • NORTH CAROLINA • 27101

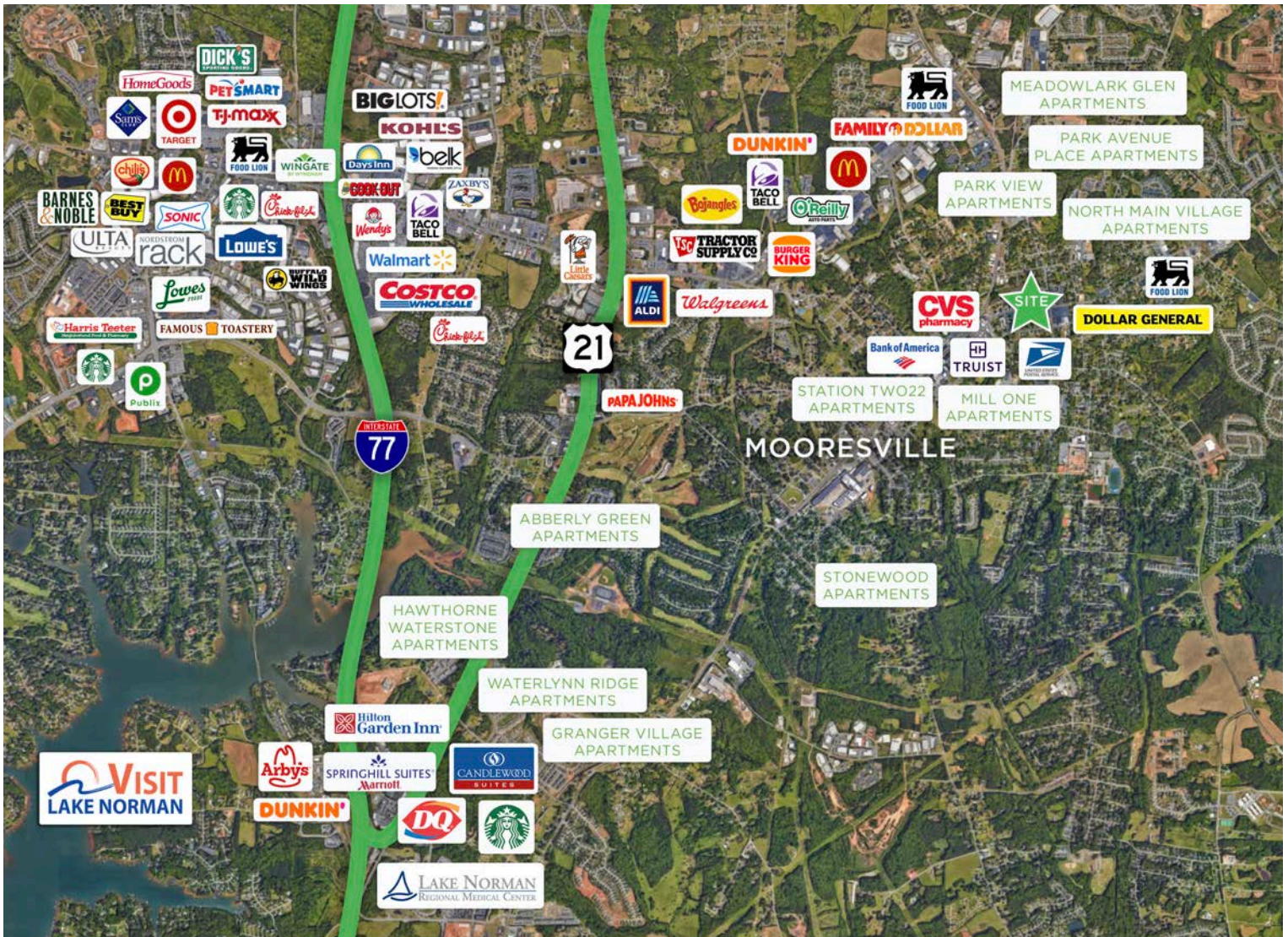
LTPCOMMERCIAL.COM • 336.724.1715

±1.42 ACRES FOR SALE

CLOVER STREET, MOORESVILLE, NC 28115

Linville | Team Partners

COMMERCIAL REAL ESTATE



MOORESVILLE, NORTH CAROLINA

- **#1 FASTEST GROWING CITY IN NORTH CAROLINA**
GOBankingRates, 2023
- **#1 LOWEST TAX RATE IN CHARLOTTE REGION**
NC Department of Commerce, 2023
- **#1 COUNTY FOR ECONOMIC GROWTH**
(CHARLOTTE METRO)
Charlotte Business Journal, 2023
- **#2 FASTEST NC COUNTY POPULATION GROWTH**
Charlotte Business Journal, 2023
- **#2 FASTEST GROWING RETAIL SECTOR IN NC**
NC Department of Commerce, 2023
- **#14 BEST COUNTIES TO LIVE IN NC**
Niche 2023

L | T

206 W. FOURTH STREET • WINSTON-SALEM • NORTH CAROLINA • 27101

LTPCOMMERCIAL.COM • 336.724.1715

±1.42 ACRES FOR SALE

CLOVER STREET, MOORESVILLE, NC 28115

Linville | Team Partners

COMMERCIAL REAL ESTATE

SITE TAX PINS

326 CLOVER STREET	4667225560
324 CLOVER STREET	4667225359
320 CLOVER STREET	4667225365
CLOVER STREET	467225380
310 CLOVER STREET	4667225250
304 CLOVER STREET	4667226124
N. CHURCH STREET	4667225408



PROPERTY INFORMATION

PROPERTY TYPE	Land	# OF PARCELS	7
ACRES ±	1.42	COUNTY	Iredell

PRICING & TERMS

SALE PRICE	\$2,912,000
------------	-------------

DESCRIPTION

Entitled and site plan approved with the Mooresville Unified Development Ordinance (UDO), this multifamily development opportunity offers many desirable amenities. You won't find a more desirable location in Mooresville- one block from downtown N. Main Street overlooking Liberty Park. This project features 92 units with onsite parking. Multiple points of ingress/egress from N. Church Street and E. Iredell Avenue. Site is within the Mooresville Graded School District, which is a top ranked district in North Carolina, and across the street from Mill One and Liberty Park. Owner will sell, joint venture, or owner finance.

The information contained herein has been taken from sources deemed to be reliable. Linville Team Partners makes no representation or warranties, expressed or implied, as to the accuracy of this information. All information in this document is subject to verification prior to purchase or lease.

L | T

206 W. FOURTH STREET • WINSTON-SALEM • NORTH CAROLINA • 27101

LTPCOMMERCIAL.COM • 336.724.1715