

6116 OLD MENDENHALL ROAD

FOR SALE/LEASE | ARCHDALE, NC 27263

Linville | Team Partners

COMMERCIAL REAL ESTATE

INDUSTRIAL/WAREHOUSE OPPORTUNITY WITH ± 2.0 ACRES OF OUTDOOR STORAGE



PROPERTY HIGHLIGHTS

PROPERTY TYPE	Industrial/Warehouse
AVAILABLE SF \pm	31,128
SALE PRICE	\$2,700,000
LEASE RATE	\$5.95, NNN

DESCRIPTION

$\pm 31,128$ SF stand-alone industrial/warehouse in Archdale! Just south of High Point and under a mile from Business I-85. Features a modern office buildout with a break room and conference room. The heated warehouse offers 14' clear height, 7 drive-in doors (20x12, 16x12, 12x12(4), 15x11), and 1 dock-height bay with 2 roll-up doors. The 4.09 acre property has ample parking, laydown, or trailer space, plus fencing and an automated security gate. Less than 30 minutes to Greensboro/Piedmont Triad International Airport and 1.25 hours to Charlotte.



KATIE HAYES

E Katie@LTPcommercial.com

M 336.473.0206

P 336.724.1715

NICK GONZALEZ

E Nick@LTPcommercial.com

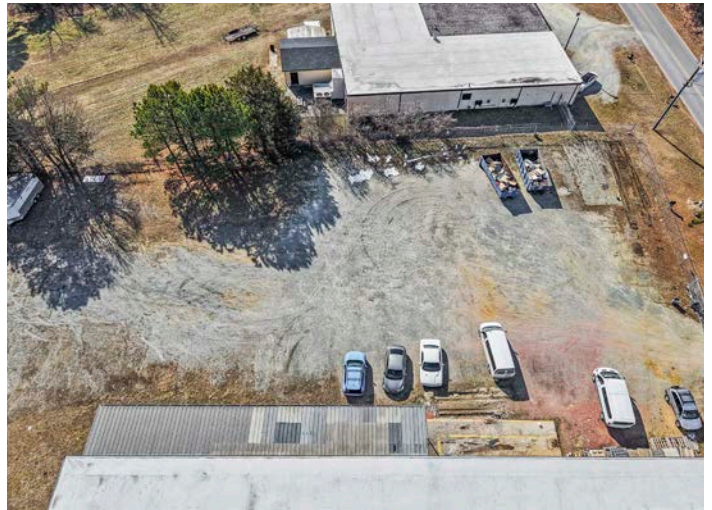
P 336.724.1715

6116 OLD MENDENHALL ROAD

FOR SALE/LEASE | ARCHDALE, NC 27263

Linville | Team Partners

COMMERCIAL REAL ESTATE



L | T

206 W. FOURTH STREET • WINSTON-SALEM • NORTH CAROLINA • 27101

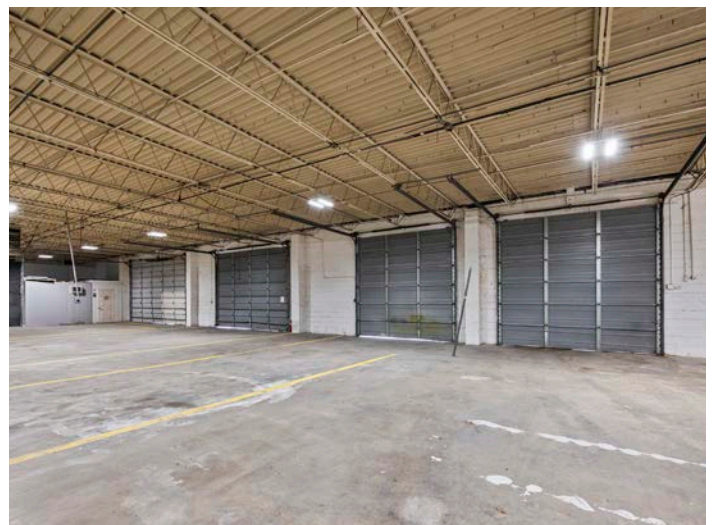
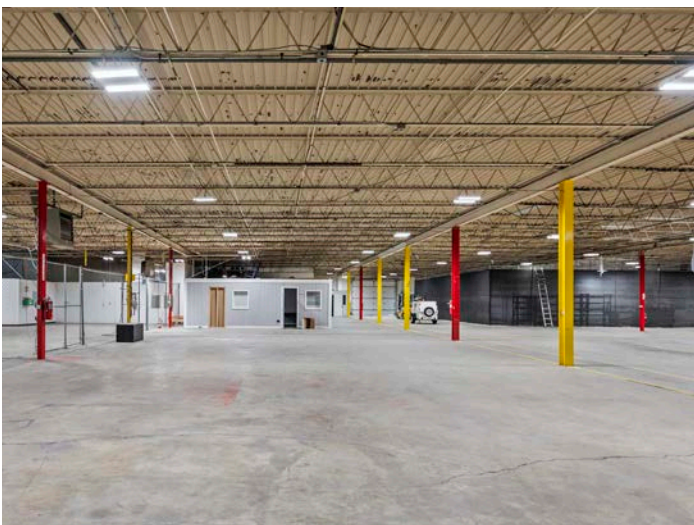
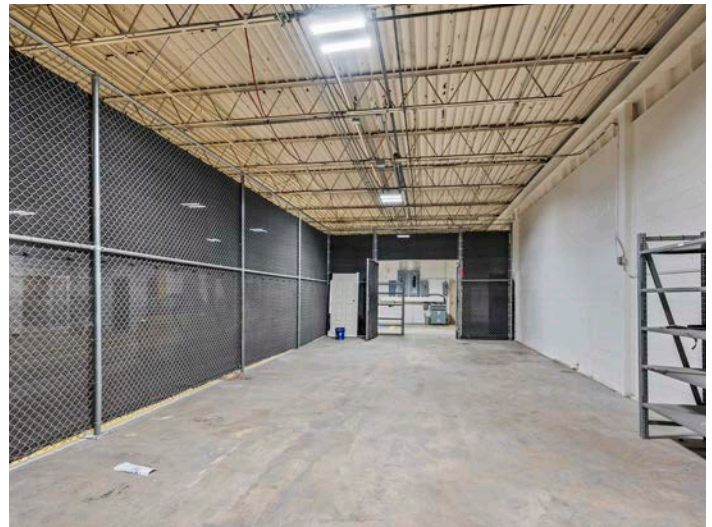
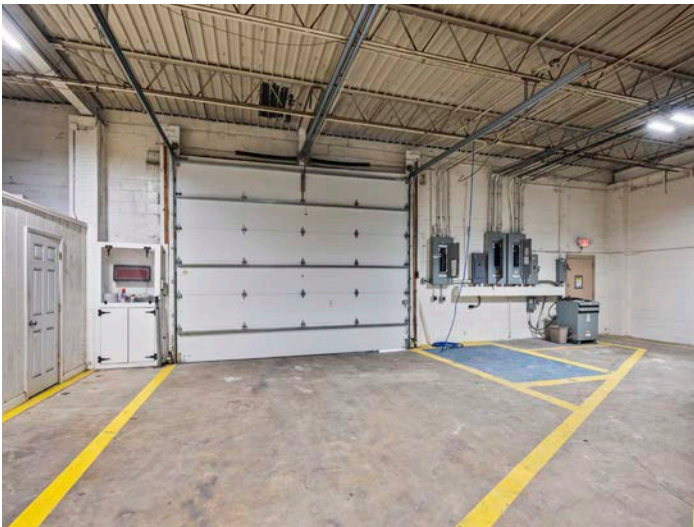
LTPCOMMERCIAL.COM • 336.724.1715

6116 OLD MENDENHALL ROAD

FOR SALE/LEASE | ARCHDALE, NC 27263

Linville | Team Partners

COMMERCIAL REAL ESTATE



L | T

206 W. FOURTH STREET • WINSTON-SALEM • NORTH CAROLINA • 27101

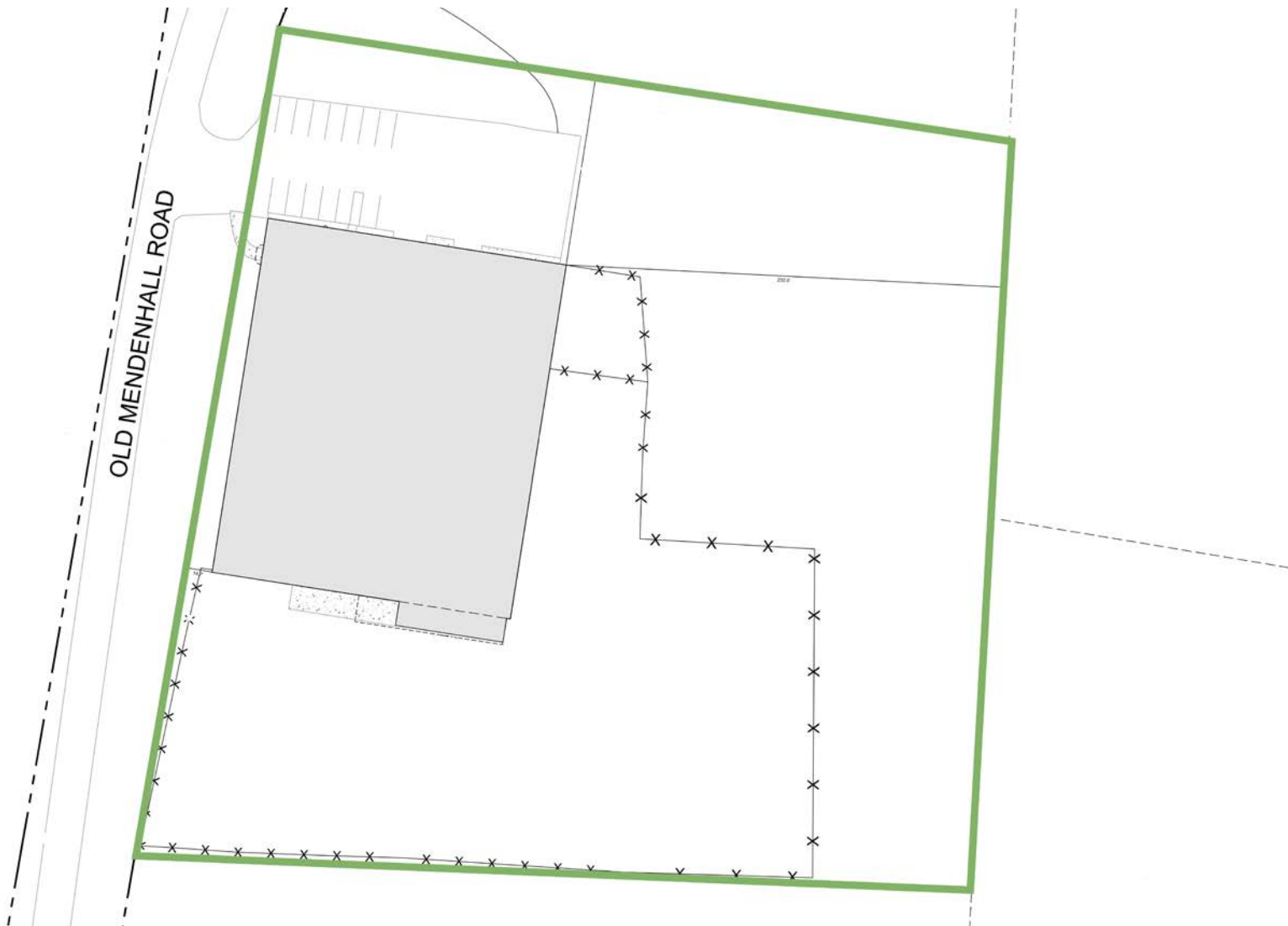
LTPCOMMERCIAL.COM • 336.724.1715

6116 OLD MENDENHALL ROAD

FOR SALE/LEASE | ARCHDALE, NC 27263

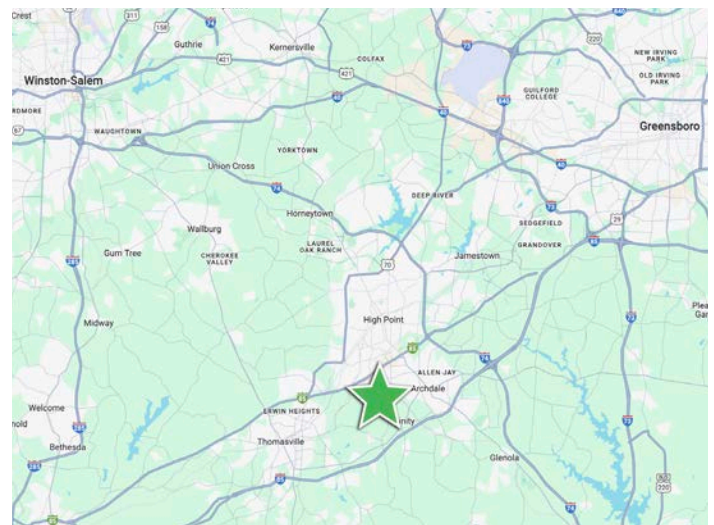
Linville | Team Partners

COMMERCIAL REAL ESTATE



KEY FEATURES

- ±31,128 SF stand-alone industrial/warehouse on 4.09 acres
- South of High Point and under a mile from Business I-85
- Features a modern office buildout with a break room and conference room
- Offers 14' clear height, 7 drive-in doors (20x12, 16x12, 12x12(4), 15x11), and 1 dock-height bay with 2 roll-up doors
- Ample parking, laydown, or trailer space, plus fencing and an automated security gate



L | T

206 W. FOURTH STREET • WINSTON-SALEM • NORTH CAROLINA • 27101

LTPCOMMERCIAL.COM • 336.724.1715

6116 OLD MENDENHALL ROAD

FOR SALE/LEASE | ARCHDALE, NC 27263

Linville | Team Partners

COMMERCIAL REAL ESTATE

DISTANCE TO

HIGH POINT	3.5 Miles
GREENSBORO	18.3 Miles
WINSTON-SALEM	23.7 Miles
CHARLOTTE	80.6 Miles



PROPERTY INFORMATION

PROPERTY TYPE	Industrial/Warehouse	CEILING HEIGHT	14'
AVAILABLE SF ±	31,128	DOCK DOORS	2
ACRES	4.09	DRIVE-INS	7
YEAR BUILT	1965	ZONING	M2-CZ
PARKING	Available	TAX PIN	6798-98-1803

PRICING & TERMS

SALE PRICE	\$2,700,000	LEASE RATE	\$5.95, NNN
------------	-------------	------------	-------------

DESCRIPTION

±31,128 SF stand-alone industrial/warehouse in Archdale! Just south of High Point and under a mile from Business I-85. Features a modern office buildout with a break room and conference room. The heated warehouse offers 14' clear height, 7 drive-in doors (20x12, 16x12, 12x12(4), 15x11), and 1 dock-height bay with 2 roll-up doors. The 4.09 acres property has ample parking, laydown, or trailer space, plus fencing and an automated security gate. Less than 30 minutes to Greensboro/Piedmont Triad International Airport and 1.25 hours to Charlotte.

The information contained herein has been taken from sources deemed to be reliable. Linville Team Partners makes no representation or warranties, expressed or implied, as to the accuracy of this information. All information in this document is subject to verification prior to purchase or lease.

L | T

206 W. FOURTH STREET • WINSTON-SALEM • NORTH CAROLINA • 27101
LTPCOMMERCIAL.COM • 336.724.1715