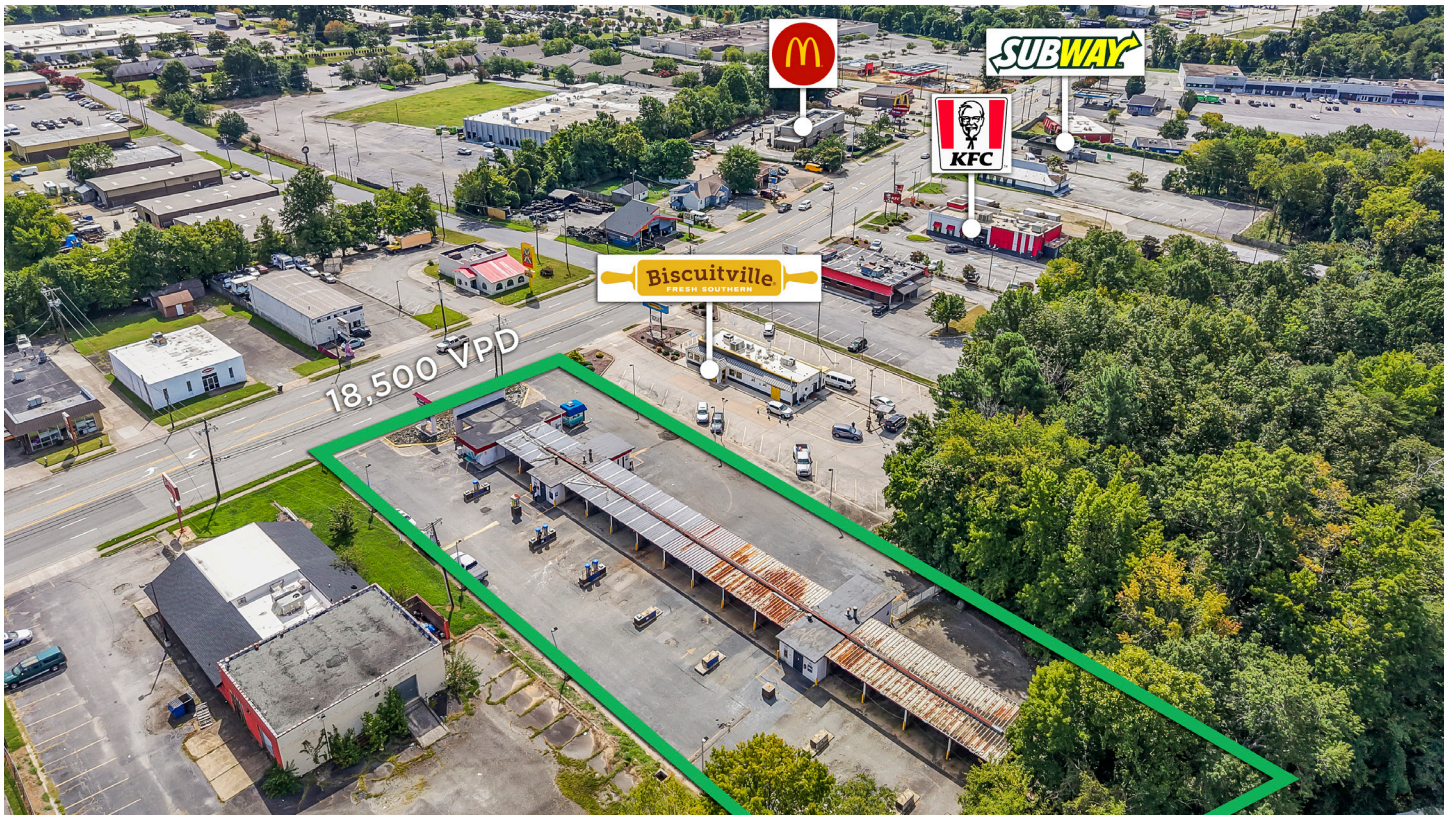


2334 RANDLEMAN ROAD

FOR SALE | GREENSBORO, NC 27406

Linville | Team Partners

COMMERCIAL REAL ESTATE



PROPERTY HIGHLIGHTS

PROPERTY TYPE	Redevelopment
ACRES	1.22
SALE PRICE	\$535,000

DESCRIPTION

Highly visible car wash site prime for revitalization or redevelopment! The 1.22 acre property is located in a dense retail corridor off I-40 and offers premium frontage, strong traffic counts, and zoning flexibility for a wide range of uses for investors, developers, and owner-operators. The existing configuration consists 12 self-serve bays – Wash N' Go Car Wash (Owner) currently operates 6 bays, and Signature Detailing (Tenant) currently operates out of the ±750 SF conditioned office with multiple bays on a month-to-month lease.



DOM MAGGIO

E Dom@LTPcommercial.com

M 443.540.9293

P 336.724.1715

NICK GONZALEZ

E Nick@LTPcommercial.com

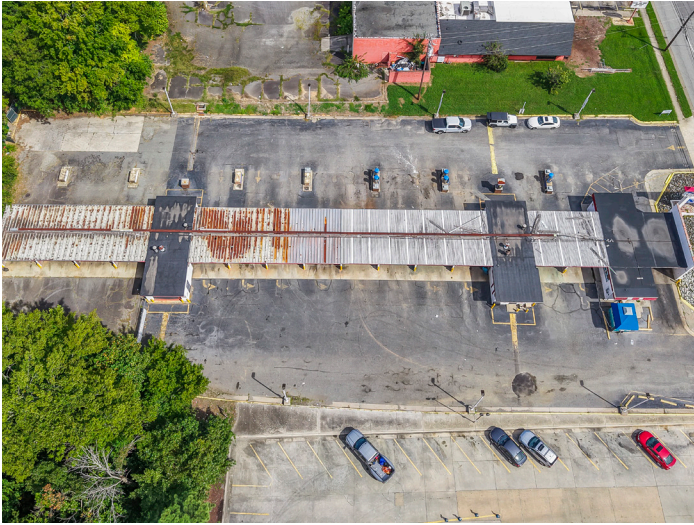
P 336.724.1715

2334 RANDLEMAN ROAD

FOR SALE | GREENSBORO, NC 27406

Linville | Team Partners

COMMERCIAL REAL ESTATE



L | T

206 W. FOURTH STREET • WINSTON-SALEM • NORTH CAROLINA • 27101

LTPCOMMERCIAL.COM • 336.724.1715

2334 RANDLEMAN ROAD

FOR SALE | GREENSBORO, NC 27406

Linville | Team Partners

COMMERCIAL REAL ESTATE



PROPERTY INFORMATION

PROPERTY TYPE	Redevelopment	PROPERTY SUBTYPE	Retail/Car Wash
ACRES	1.22	ZONING	C-M

PRICING & TERMS

SALE PRICE	\$535,000
------------	-----------

DESCRIPTION

Highly visible car wash site prime for revitalization or redevelopment! The 1.22 acre property is located in a dense retail corridor off I-40 and offers premium frontage, strong traffic counts, and zoning flexibility for a wide range of uses for investors, developers, and owner-operators. The existing configuration consists 12 self-serve bays – Wash N' Go Car Wash (Owner) currently operates 6 bays, and Signature Detailing (Tenant) currently operates out of the ±750 SF conditioned office with multiple bays on a month-to-month lease.

The information contained herein has been taken from sources deemed to be reliable. Linville Team Partners makes no representation or warranties, expressed or implied, as to the accuracy of this information. All information in this document is subject to verification prior to purchase or lease.