

# 2015 BINFORD STREET

FLEX/INDUSTRIAL PROPERTY **FOR LEASE**

## PROPERTY DESCRIPTION

±1,750 - 3,500 SF flex/industrial lease opportunity in Greensboro, NC. This property offers versatile and customizable space, with two 8'x10' drive-in doors, 14' ceiling height, 2 offices, and a fenced and paved yard with automatic gate. Located 1.5 miles from I-40.

## OFFERING SUMMARY

Lease Rate:	\$15.00 SF/yr (NNN)
Available SF:	1,750 - 3,500 SF
Lot Size:	0.2 Acres

Will Jones

336.455.2818  
wjones@ltpcommercial.com

Drew Siegrist

336.529.4400  
drew@ltpcommercial.com

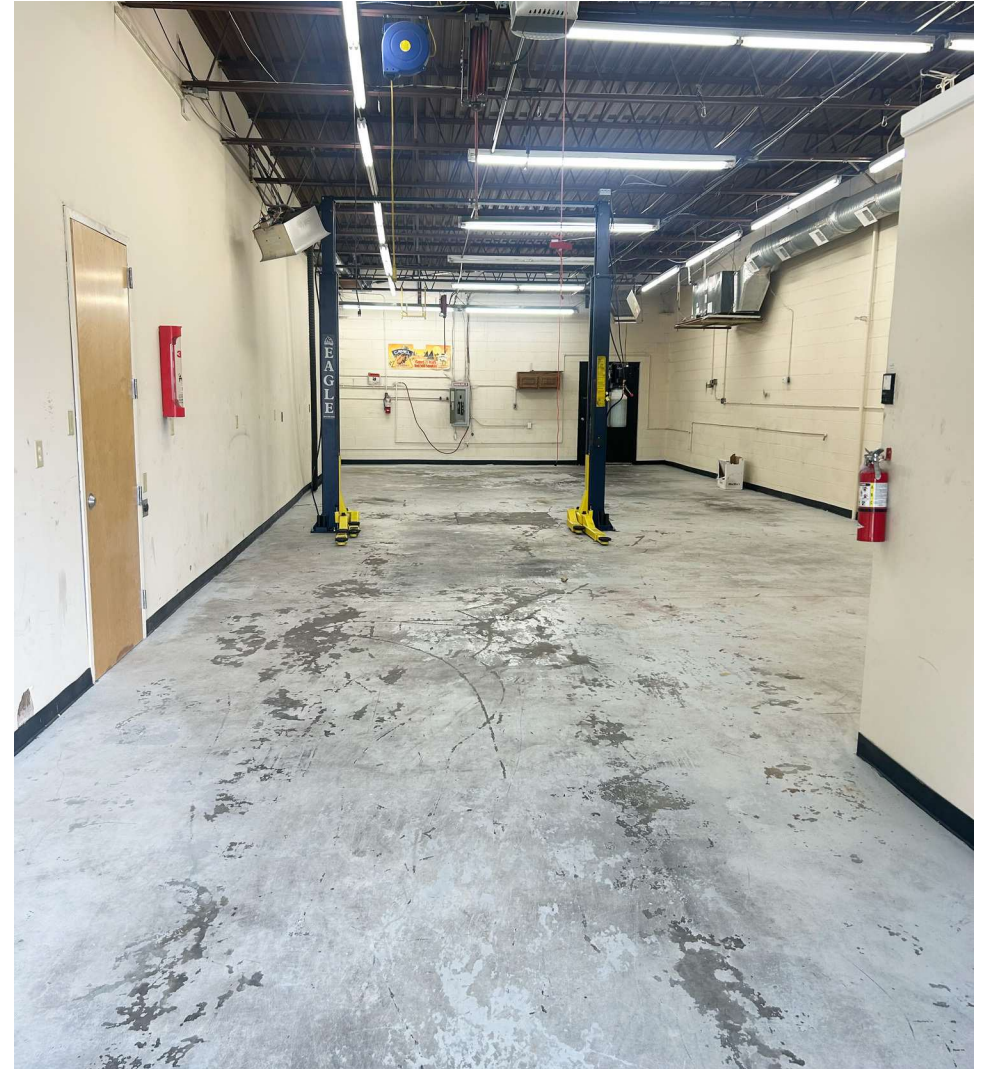
**Linville** | Team Partners  
COMMERCIAL REAL ESTATE

GREENSBORO, NC

L | T

# 2015 BINFORD STREET

FLEX/INDUSTRIAL PROPERTY **FOR LEASE**



Will Jones

336.455.2818  
wjones@ltpcommercial.com

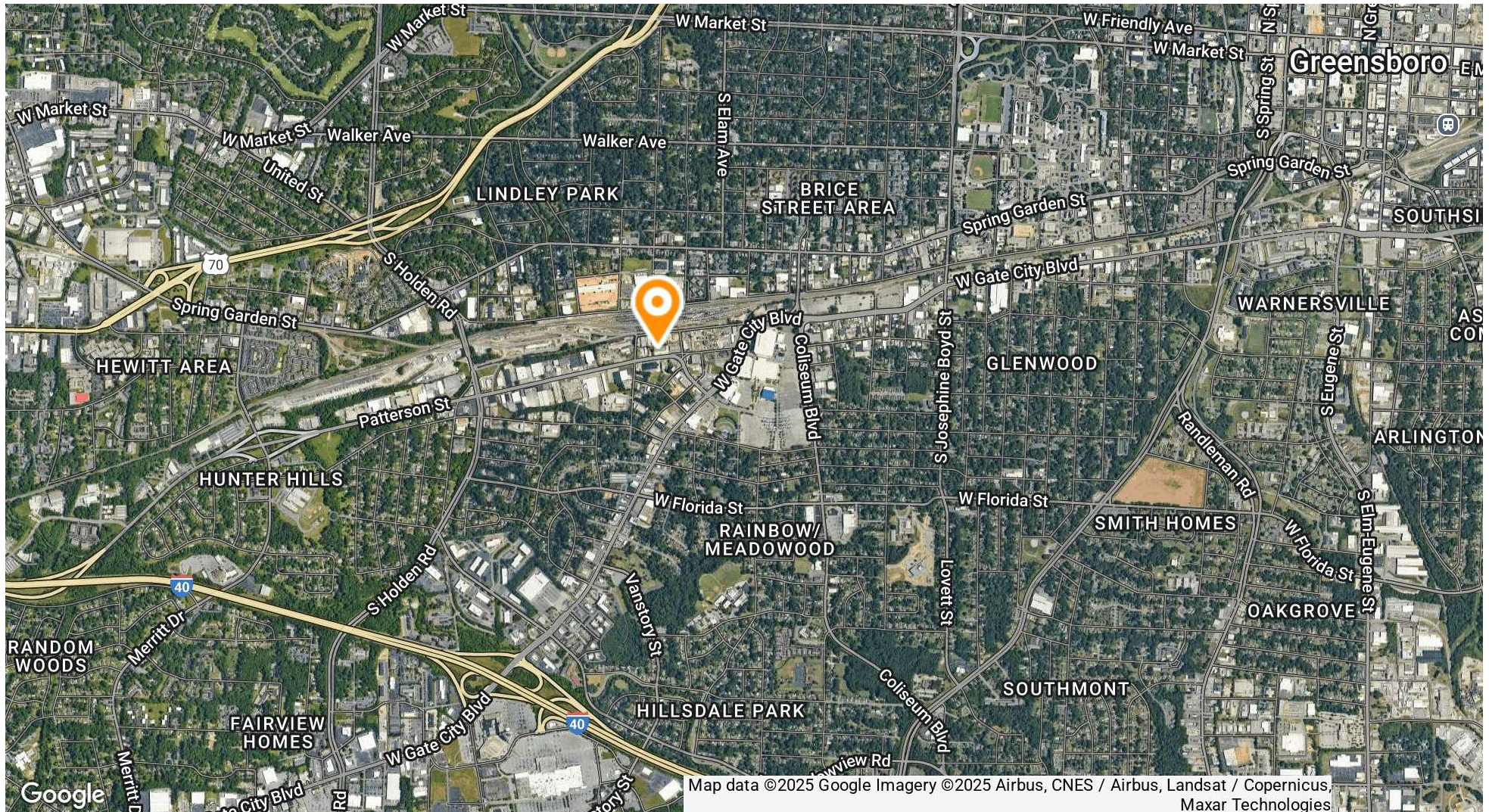
Drew Siegrist

336.529.4400  
drew@ltpcommercial.com

**Linville** | Team Partners  
COMMERCIAL REAL ESTATE

# 2015 BINFORD STREET

FLEX/INDUSTRIAL PROPERTY **FOR LEASE**



Will Jones

336.455.2818  
wjones@ltpcommercial.com

Drew Siegrist

336.529.4400  
drew@ltpcommercial.com

**Linville** | Team Partners  
COMMERCIAL REAL ESTATE

# 2015 BINFORD STREET

FLEX/INDUSTRIAL PROPERTY **FOR LEASE**

## LOCATION INFORMATION

Street Address	2015 Binford St
City, State, Zip	Greensboro, NC 27403

## PROPERTY INFORMATION

Property Type	Flex/Industrial
Zoning	Heavy Industrial (HI)
Available Space	±1,750 - 3,500 SF
Lot Size	0.2 Acres
Power	3 Phase
Drive-In Doors	2 (8'x10')
Ceiling Height	14 ft
Year Built	1990
HVAC	Fully Heated & Cooled
Restrooms	2
Yard	Fenced & Paved with Gate



**LEASE RATE:** \$15.00 SF/YR  
(NNN)

Will Jones

336.455.2818  
wjones@ltpcommercial.com

Drew Siegrist

336.529.4400  
drew@ltpcommercial.com

The information contained herein has been taken from sources deemed to be reliable. Linville Team Partners makes no representation or warranties, expressed or implied, as to the accuracy of this information. All information in this document is subject to verification prior to purchase or lease.

**Linville | Team Partners**  
COMMERCIAL REAL ESTATE